



SECTION 1
GENERAL MAPS

DISTRICTS OF SINDH



Map Legend

Administrative limits

- Country
- Province
- District

About Map

The map shows the districts in Sindh province. There are 24 districts which have variable land. Area-wise, Khairpur and Tharparkar are the largest districts.

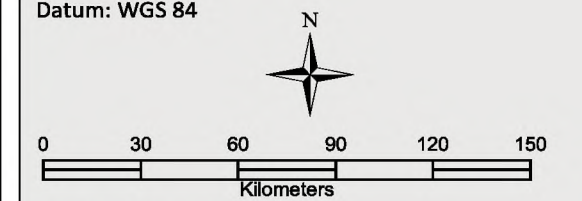
Data Sources

The Government of Sindh, FAO and GAUL

Map Scale and Datum

Nominal scale: 1:2,698,500 at A3

Datum: WGS 84



Date: 26 Jan 2016

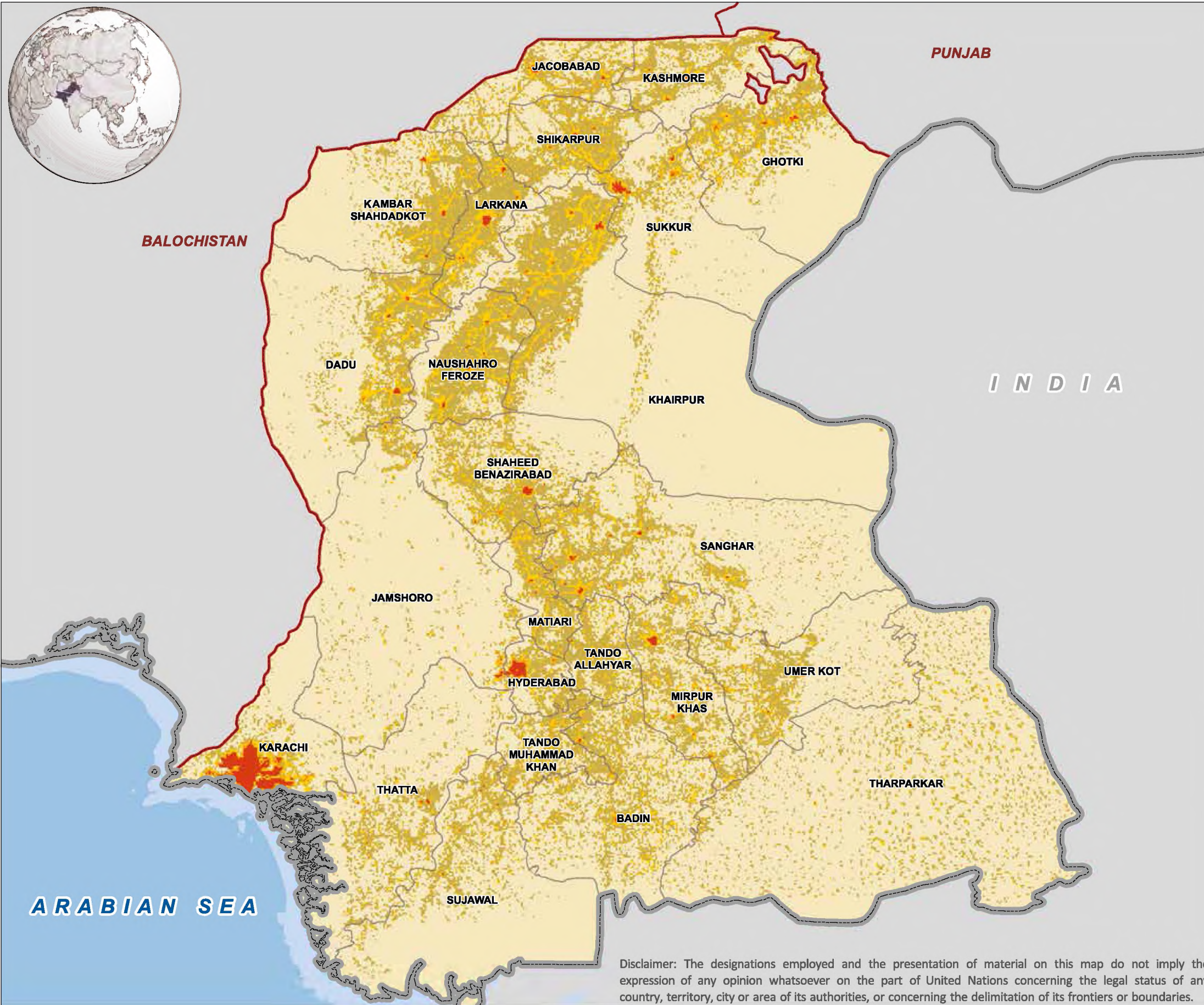
Created by: IM Unit, FAO Pakistan

Map Number: PAK_Soil Fertility Atlas_Sindh_Districts_01_20160126



Disclaimer: The designations employed and the presentation of material on this map do not imply the expression of any opinion whatsoever on the part of United Nations concerning the legal status of any country, territory, city or area of its authorities, or concerning the delimitation of its frontiers or boundaries.

POPULATION OF SINDH (per square kilometer)



Map Legend

- Administrative limits**
- Country
 - Province
 - District
- Population density (per square kilometer)**
- 0 - 100
 - 101 - 500
 - 501 - 2,500
 - 2,501 - 5,000
 - 5,001 - 130,000

About Map
The map shows population density, i.e., number of persons per square kilometer. Out of the total population (approximately 56 million), majority lives in the two big cities, Karachi and Hyderabad.

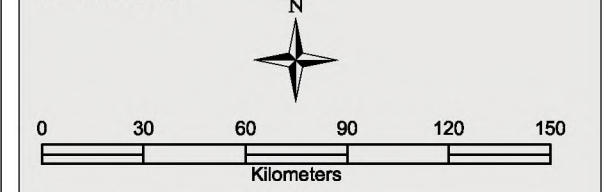
Data Sources

FAO, GAUL, LandScan data 2011

Map Scale and Datum

Nominal scale: 1:2,698,500 at A3

Datum: WGS 84



Date: 26 Jan 2016

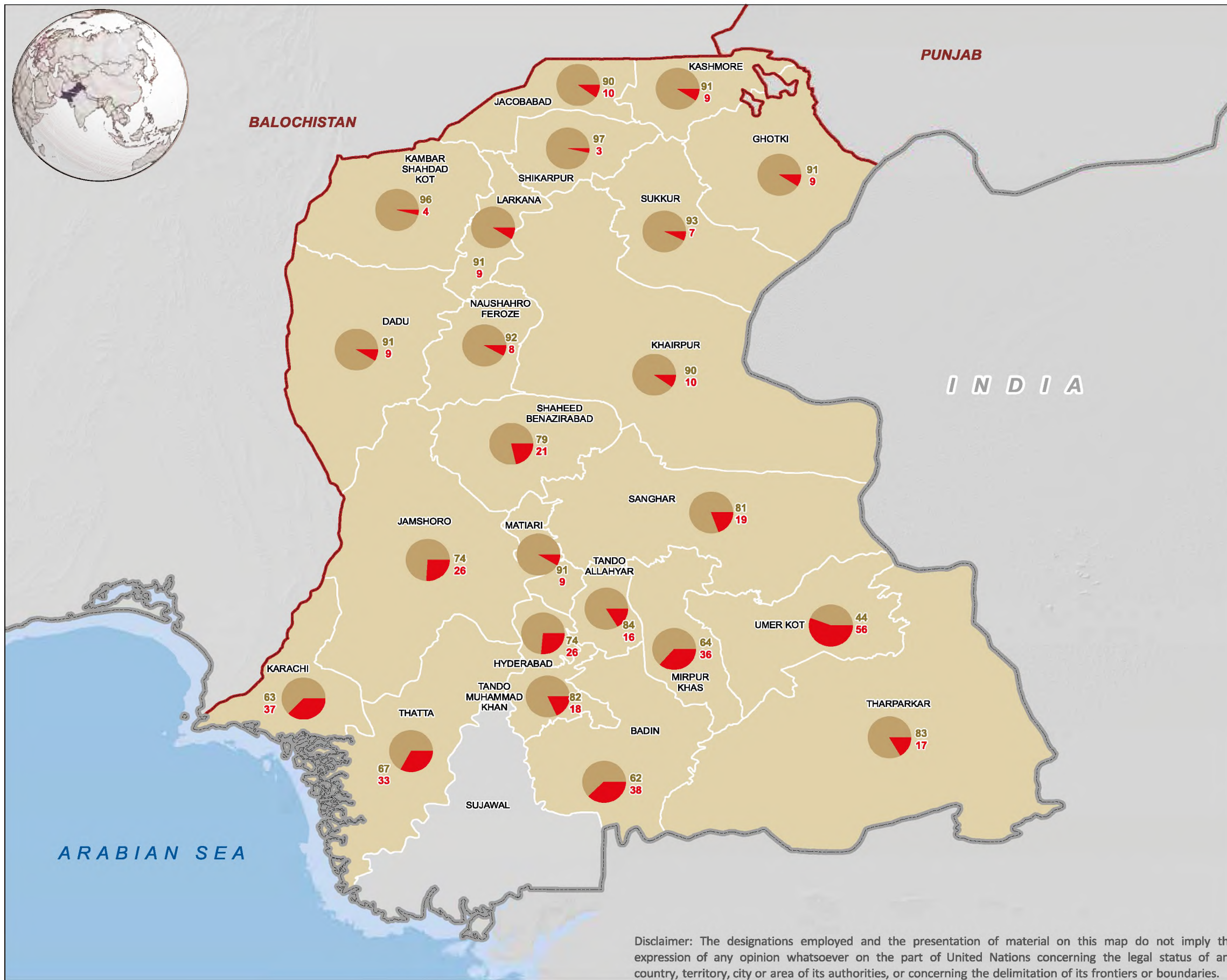
Created by: IM Unit, FAO Pakistan

Map Number: PAK_Soil Fertility Atlas_Sindh_Population_02_20160126



Disclaimer: The designations employed and the presentation of material on this map do not imply the expression of any opinion whatsoever on the part of United Nations concerning the legal status of any country, territory, city or area of its authorities, or concerning the delimitation of its frontiers or boundaries.

DISTRICT-WISE CULTIVATED AND NON-CULTIVATED AREA OF SINDH



Map Legend

Administrative limits

- Country
- Province
- District

Land Use (in percentage)

- Cultivated Area
- Non-cultivated Area

About Map

The map shows the percentage of cultivated and non-cultivated area in each district of Sindh. The percentage of cultivated area is higher in upper Sindh and gradually decreases towards south being the lowest in the coastal districts.

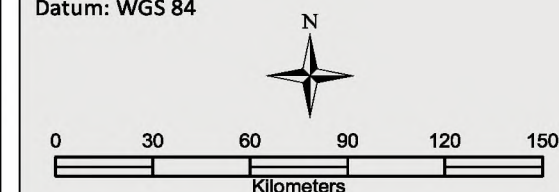
Data Sources

FAO, GAUL, Agricultural Census 2010

Map Scale and Datum

Nominal scale: 1:2,698,500 at A3

Datum: WGS 84



Date: 03 Feb 2016

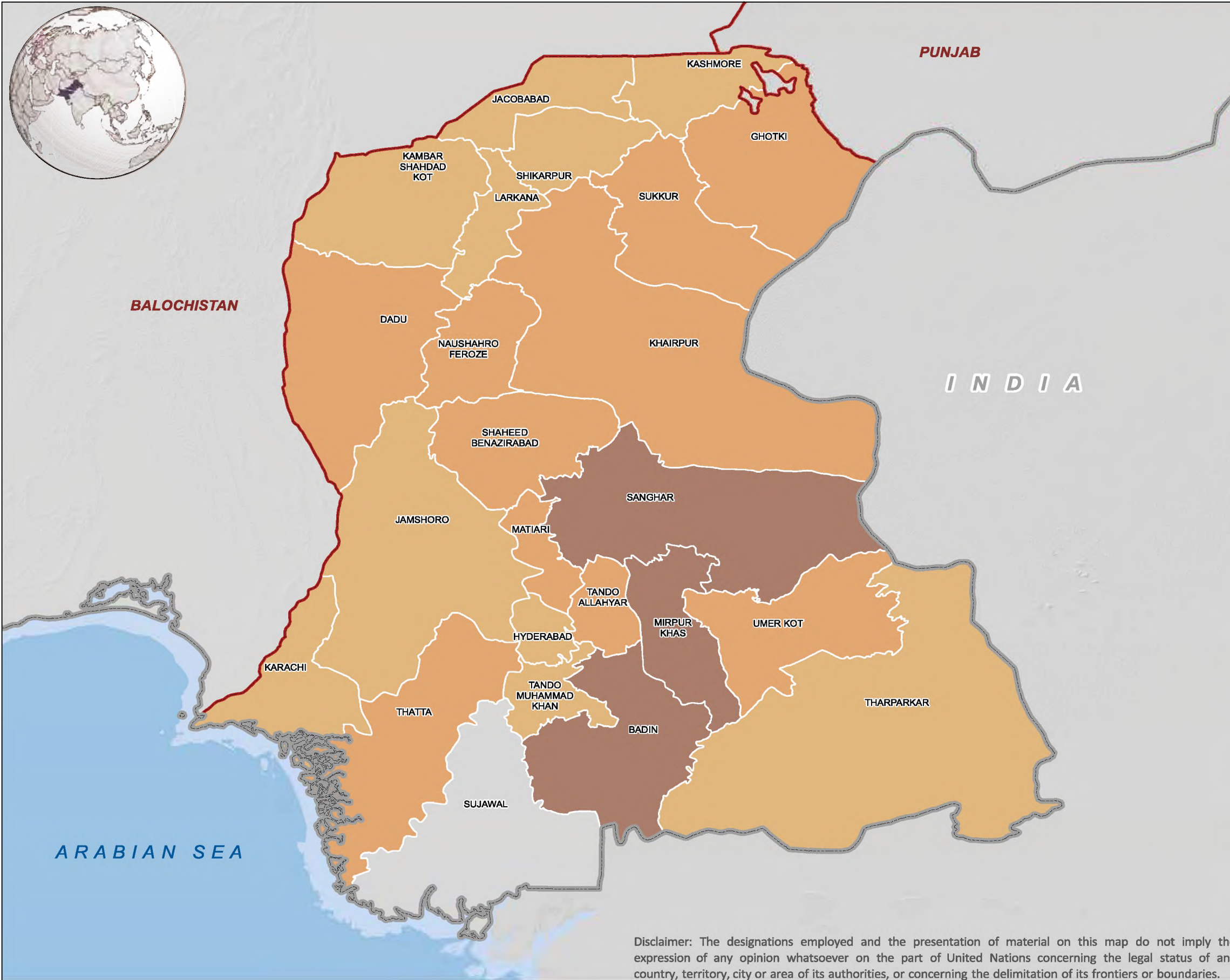
Created by: IM Unit, FAO Pakistan

Map Number: PAK_Soil Fertility Atlas_Sindh_cultiv_03_20160203



Disclaimer: The designations employed and the presentation of material on this map do not imply the expression of any opinion whatsoever on the part of United Nations concerning the legal status of any country, territory, city or area of its authorities, or concerning the delimitation of its frontiers or boundaries.

TOTAL AREA UNDER IRRIGATION IN SINDH (hectares)



Map Legend

Administrative limits

- Country
- Province
- District

Area under Irrigation (000 hectares)

- 0 - 100
- 101 - 200
- 201 - 300

About Map

The map shows the area under Irrigation in each district. The data is sourced from Agriculture Census 2010.

Data Sources

FAO, GAUL, Agricultural Census 2010

Map Scale and Datum

Nominal scale: 1:2,698,500 at A3

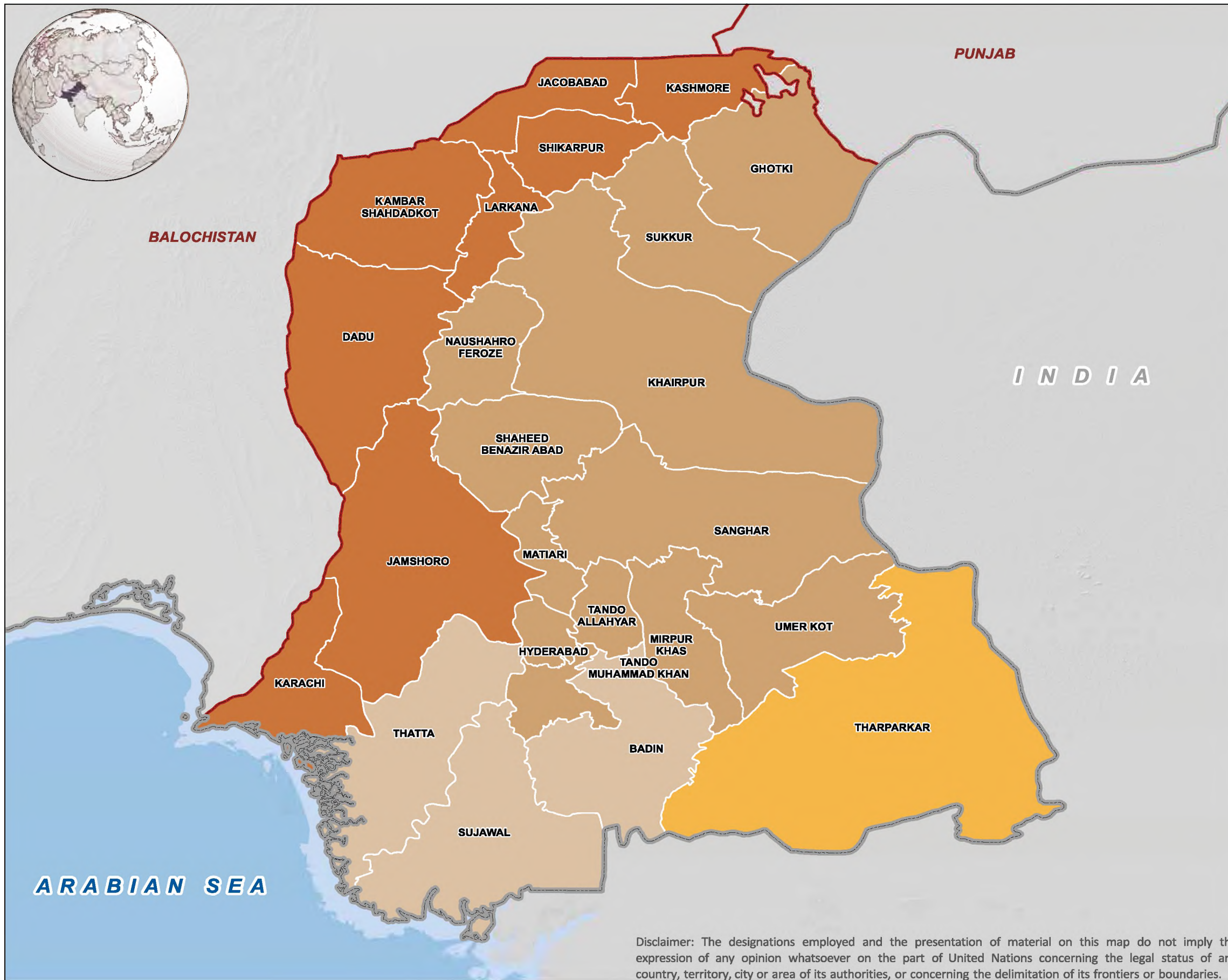
Datum: WGS 84

Date: 03 Feb 2016
 Created by: IM Unit, FAO Pakistan
 Map Number: PAK_Soil Fertility Atlas_Sindh_Irri_03_20160203



Disclaimer: The designations employed and the presentation of material on this map do not imply the expression of any opinion whatsoever on the part of United Nations concerning the legal status of any country, territory, city or area of its authorities, or concerning the delimitation of its frontiers or boundaries.

DISTRICT-WISE SOIL TYPE / PARENT MATERIAL IN SINDH



Map Legend

Administrative limits

- Country
- Province
- District

Soil Type/ Parent Material

- Piedmont plains
- Reworked sandy deposits
- Sub-recent alluvial deposits
- Sub-recent river alluvium and marine deposits

About Map

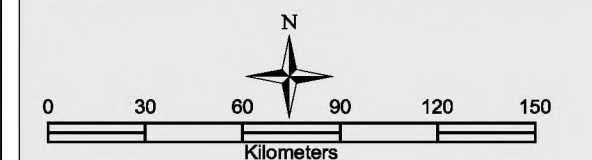
The map shows the parent material for the soils in each district. The information is derived from soil survey reports of Soil Survey of Pakistan.

Data Sources

FAO, GAUL, Soil Survey of Pakistan

Map Scale and Datum

Datum: WGS 84 Nominal scale: 1:2,698,500 at A3



Date: 20 March 2017

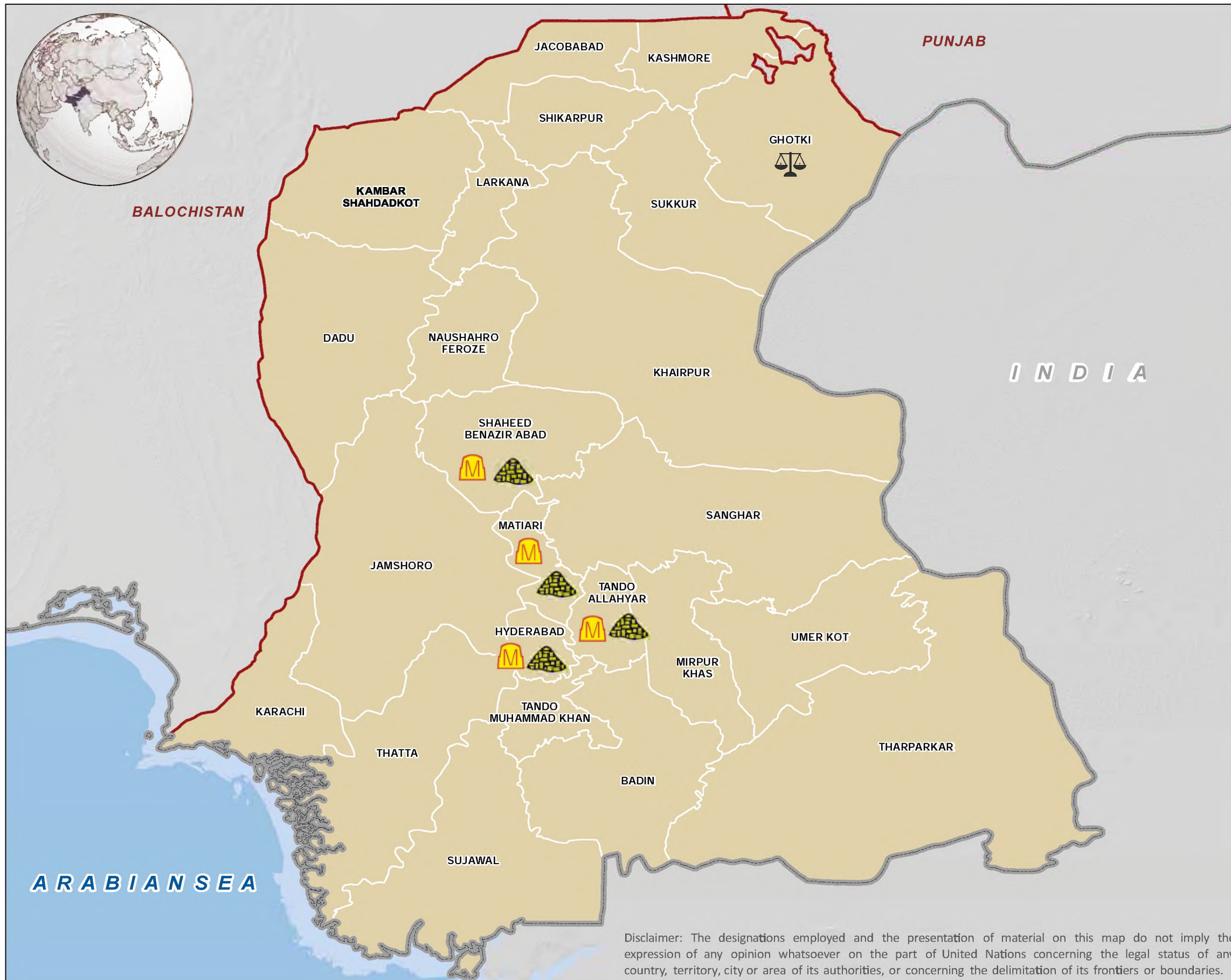
Created by: IM Unit, FAO Pakistan

Map Number: PAK_Soil Fertility Atlas_Sindh_PM_06_20160714



Disclaimer: The designations employed and the presentation of material on this map do not imply the expression of any opinion whatsoever on the part of United Nations concerning the legal status of any country, territory, city or area of its authorities, or concerning the delimitation of its frontiers or boundaries.

SOIL FERTILITY AND SOIL HEALTH MANAGEMENT PRACTICES IN SINDH



Map Legend

Administrative limits

- Country
- Province
- District

Technologies by ICARDA

(Agricultural Extension Department, Hyderabad, Sindh)

- Balanced use of N&P fertilizers using Fertilizer Prediction Model
- Micronutrients (B,Zn) for Mango orchards
- Composting of Banana residue and use of compost for Mango orchards, Wheat, and vegetables

About Map

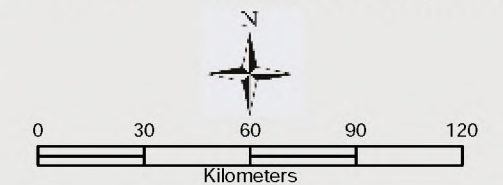
The technologies mentioned above have been demonstrated on farmers' field under an ICARDA project in five districts of Sindh. Such activities need to be promoted/adopted throughout the province for productivity enhancement.

Data Sources

FAO, GAUL, ICADA

Map Scale and Datum

Datum: WGS 84 Nominal scale: 1:2,698,500 at A3



Date: 13 July 2016

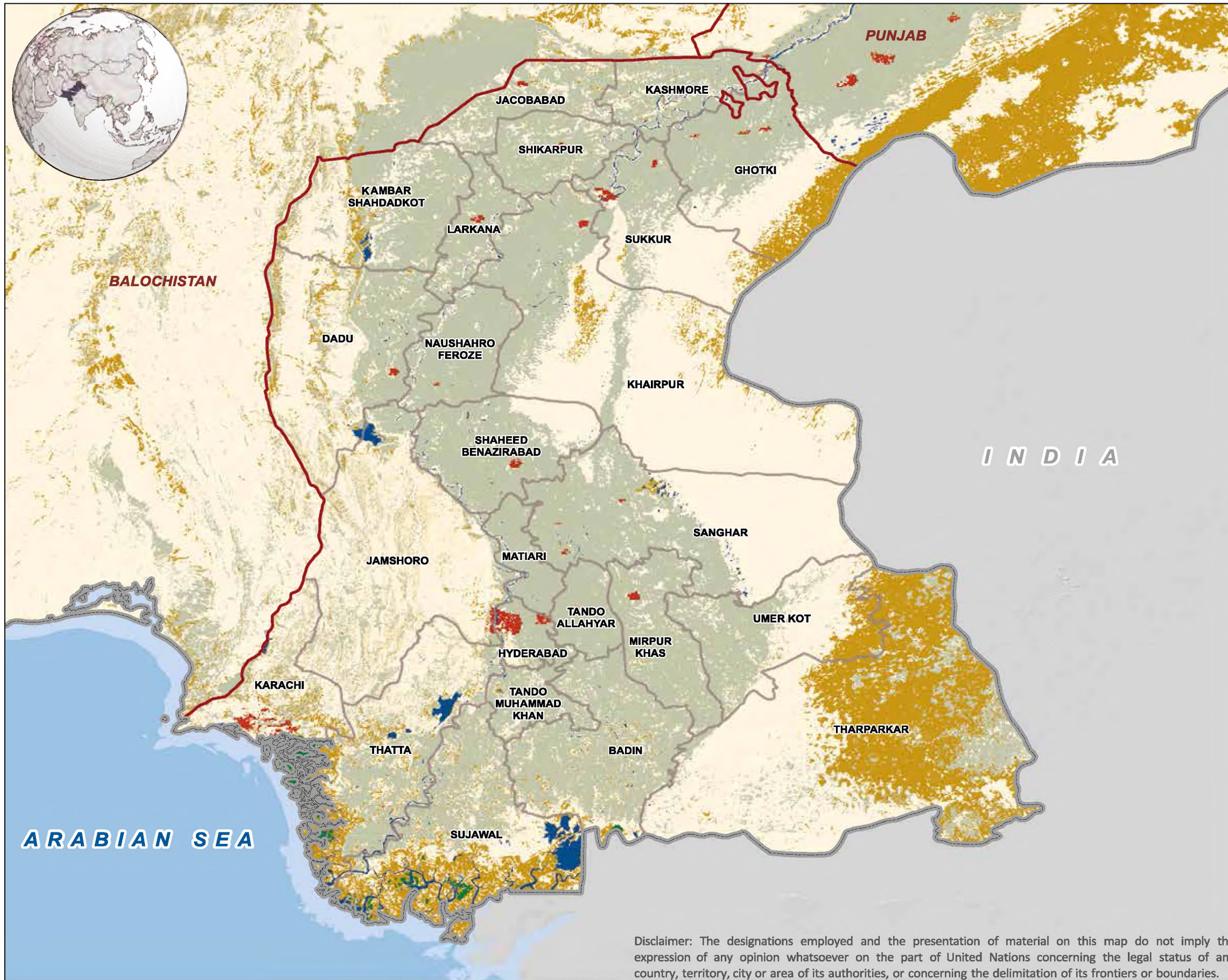
Created by: IM Unit, FAO Pakistan

Map Number: PAK_Soil Fertility Atlas_Sindh_ICARDA_07_20160213



Disclaimer: The designations employed and the presentation of material on this map do not imply the expression of any opinion whatsoever on the part of United Nations concerning the legal status of any country, territory, city or area of its authorities, or concerning the delimitation of its frontiers or boundaries.

LAND COVER MAP OF SINDH



Map Legend

Administrative limits

- Country
- Province
- District

Land Cover types

- Croplands
- Forests
- Grassland/Shrubland
- Sparse vegetation
- Builtup/Artificial areas
- Bare areas
- Water bodies

About Map

The map shows different types of land cover/natural vegetation in Sindh. The vast bare areas and even those with very sparse vegetation are potentially productive, and thus, need special attention for their development.

Data Sources

FAO, GAUL, GlobeCover data 2009

Map Scale and Datum

Nominal scale: 1:2,698,500 at A3

Datum: WGS 84

Date: 26 Jan 2016

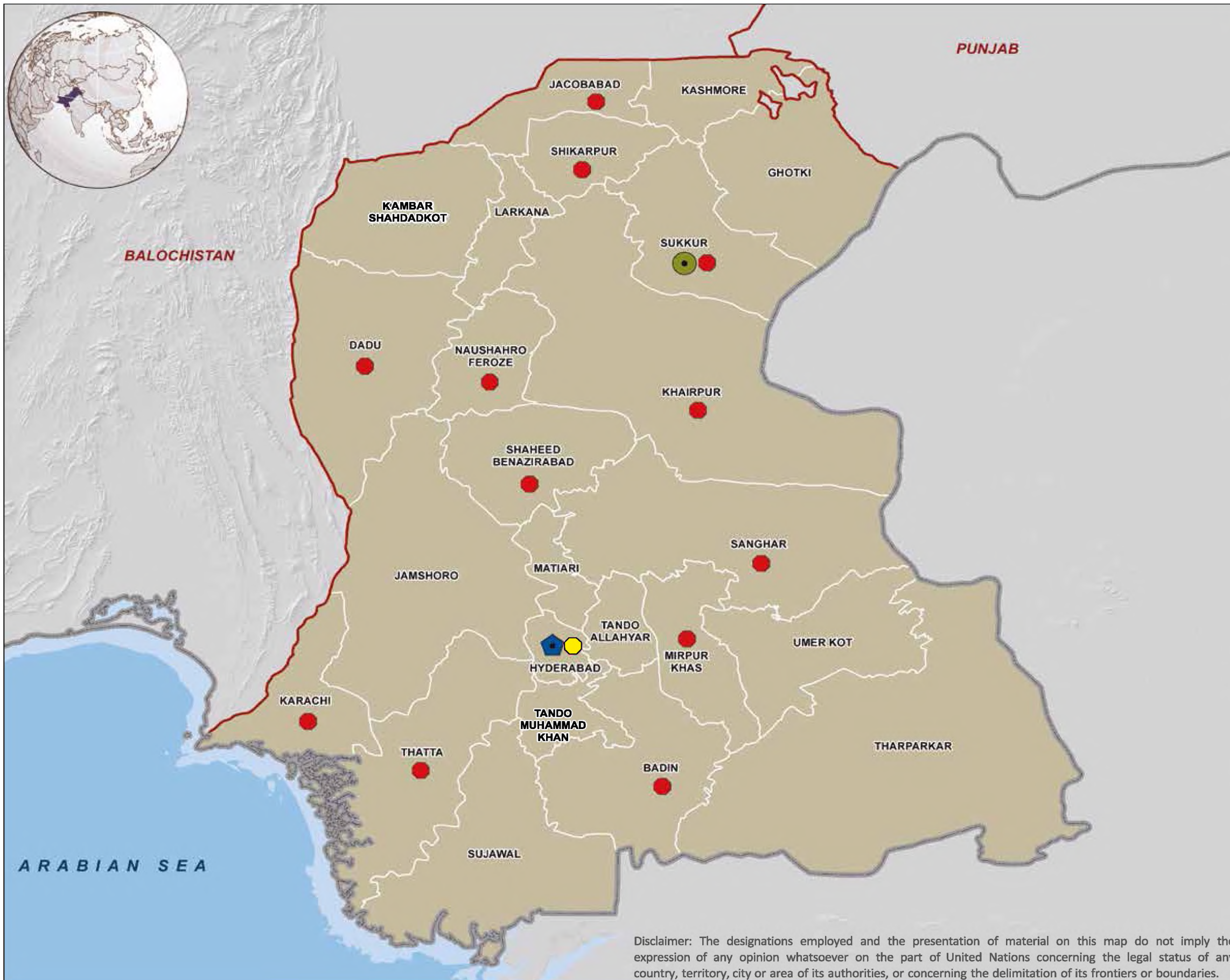
Created by: IM Unit, FAO Pakistan

Map Number: PAK_Soil Fertility Atlas_Sindh_Landcover_08_20160126



Disclaimer: The designations employed and the presentation of material on this map do not imply the expression of any opinion whatsoever on the part of United Nations concerning the legal status of any country, territory, city or area of its authorities, or concerning the delimitation of its frontiers or boundaries.

SOIL AND WATER TESTING FACILITIES IN SINDH



Map Legend

Administrative limits

- Country
- Province
- District

Soil and water testing facilities

Government of Sindh

- District Lab
- Central Analytical Lab

Fauji Fertilizer Company Limited

- Soil and Water Testing Lab/ Farm Advisory Centers

Engro Fertilizers Limited

- Soil Fertility Lab

About Map

The map shows the current locations of various soil and water testing facilities in Sindh. For complete addresses of the facilities, refer to Annex V.

Data sources

FAO, GAUL, FFCL, Government of Sindh, Engro Fertilizers Limited.

Map scale and Datum

Nominal scale: 1:2,698,500 at A3

Datum: WGS 84

0 30 60 90 120 150
Kilometers

Date: 23 Apr 2015

Created by: IM Unit, FAO Pakistan

Map Number: PAK_Soil Fertility Atlas_Sindh_Soiltesting_9_20150423



Disclaimer: The designations employed and the presentation of material on this map do not imply the expression of any opinion whatsoever on the part of United Nations concerning the legal status of any country, territory, city or area of its authorities, or concerning the delimitation of its frontiers or boundaries.