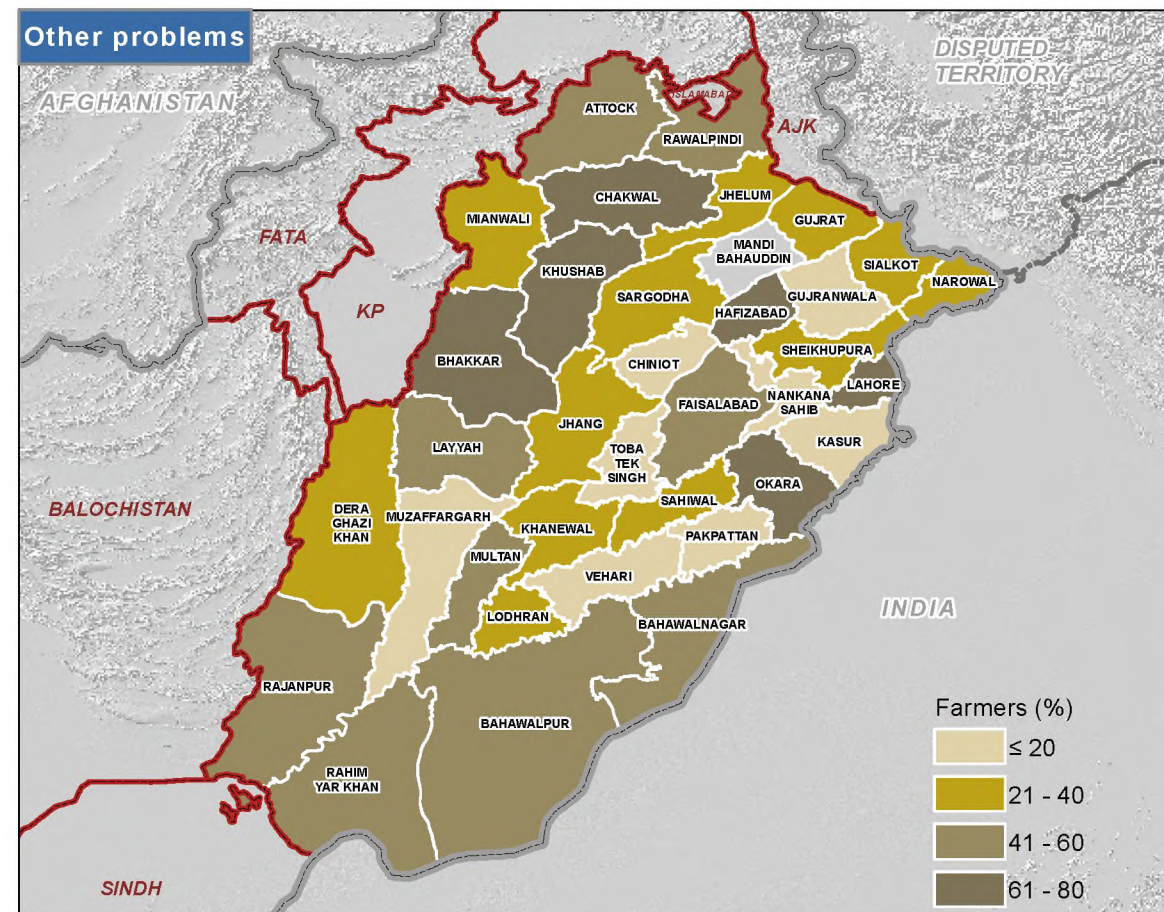
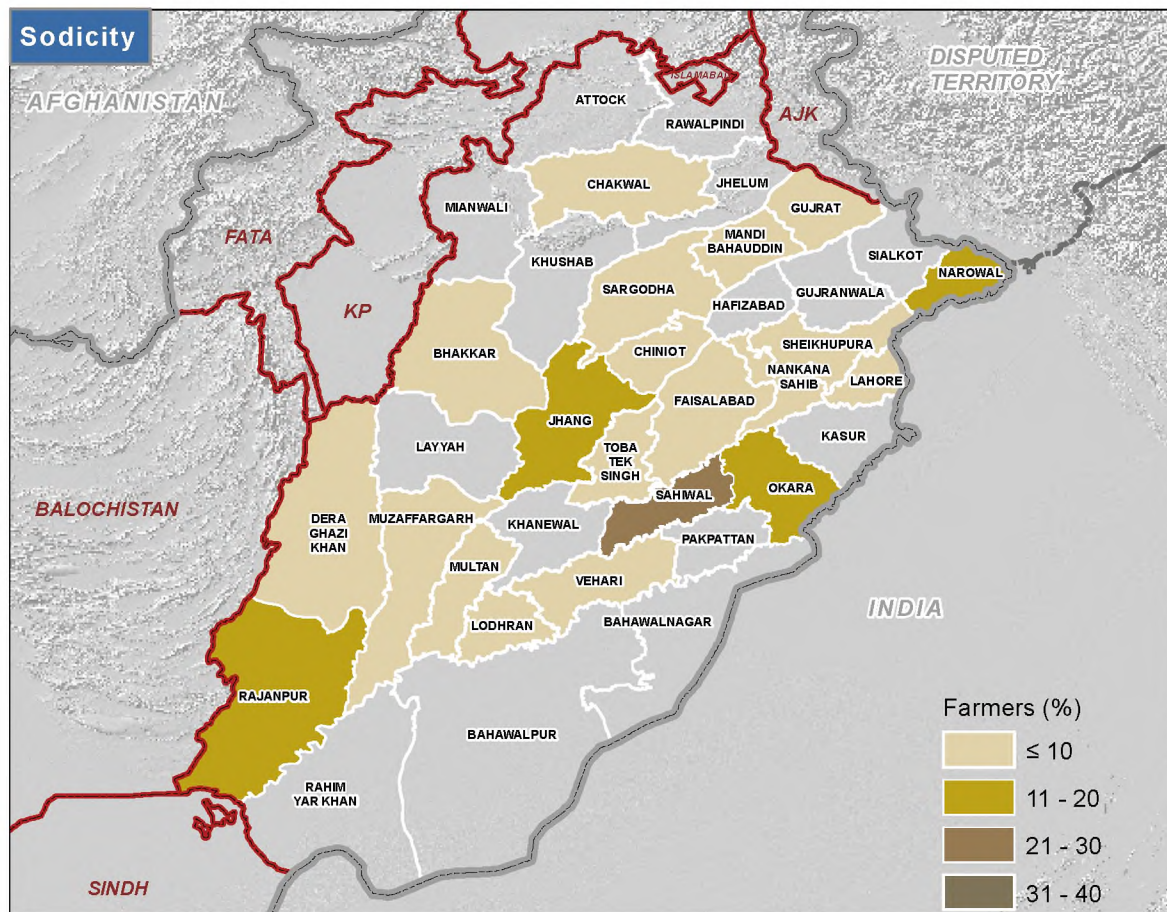
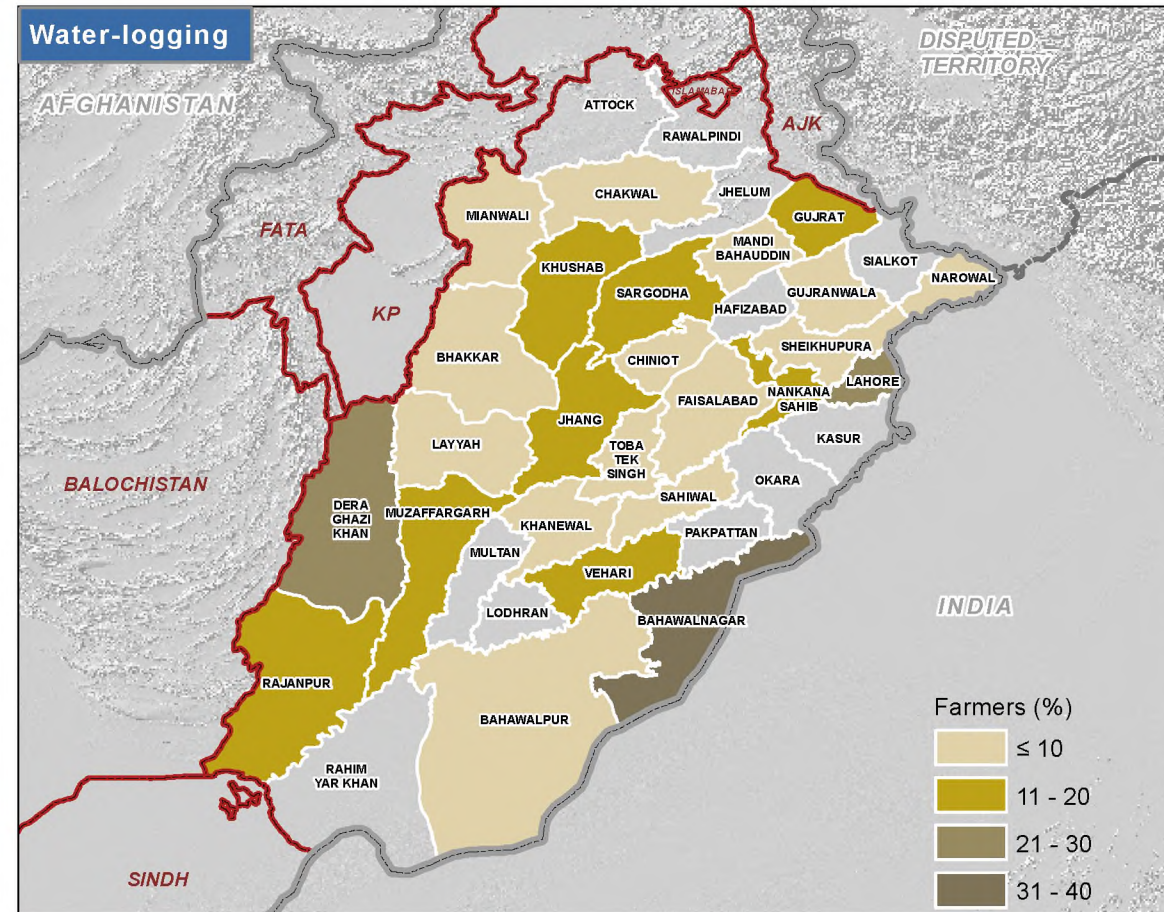
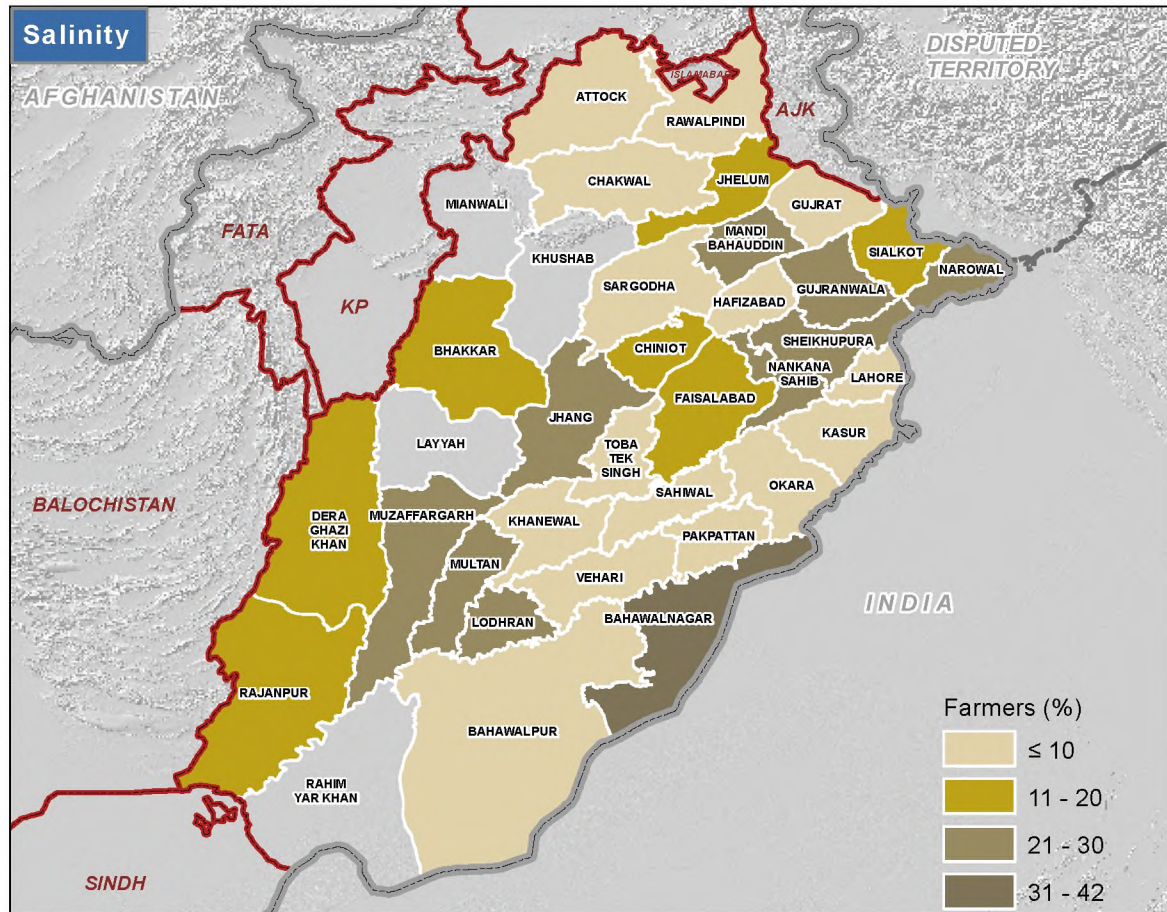


MAJOR SOIL PROBLEMS



Map Legend

Administrative limits

- Country
- Province
- District

About Map

This map shows the information about various soil related problems based on the findings of Rapid Fertilizer Use Assessment (2015). The occurrence of soil salinity problem even in the irrigated farms is matter of concern. Other problems canal water shortage, high prices of fertilizers, low commodity prices, load shedding etc. also add to the constraints affecting crop productivity.

Data Sources

FAO, GAUL, Government of the Punjab, RFUA 2015

Map Scale and Datum

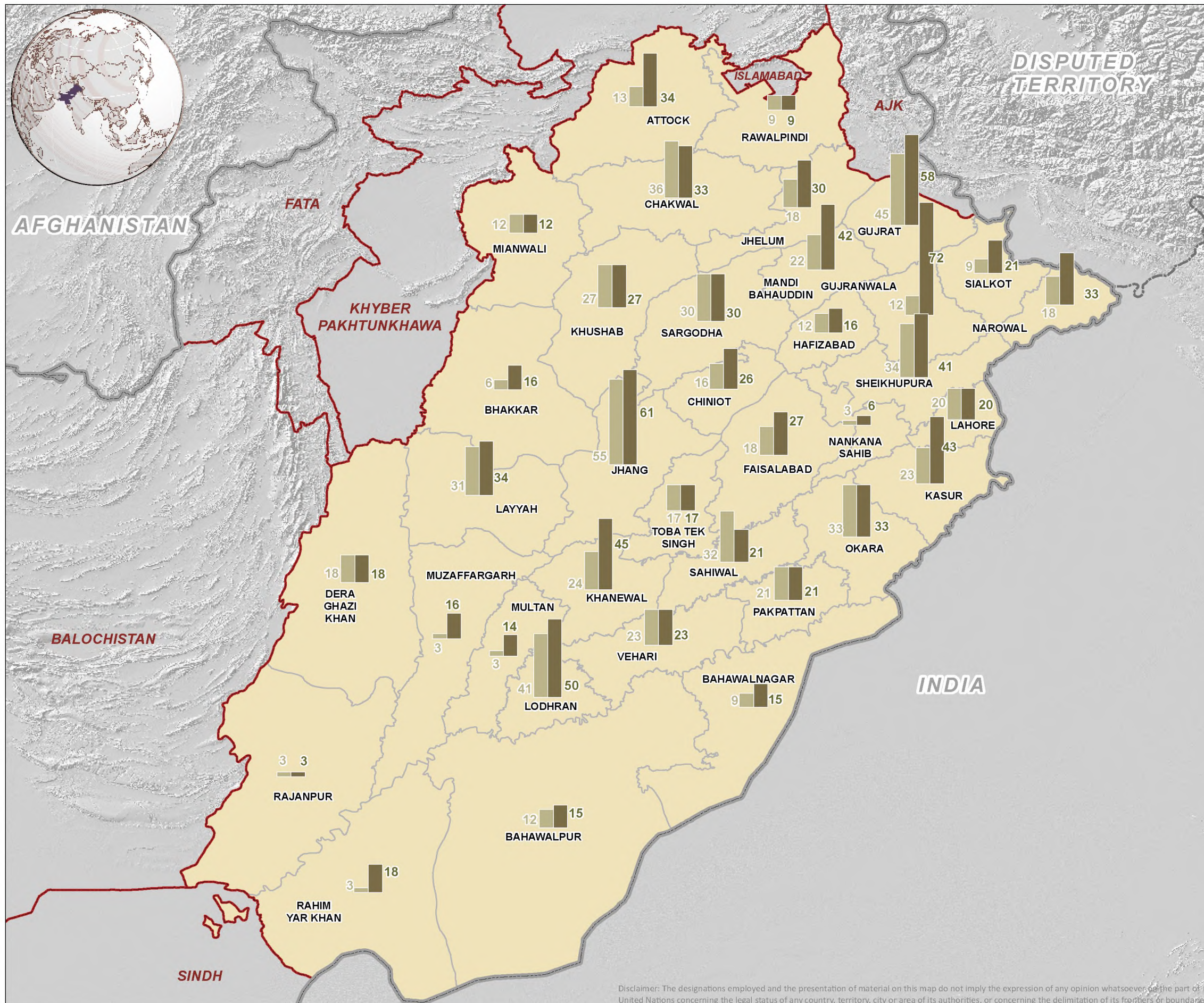
Nominal scale: 1:5,946,833 at A3
Datum: WGS 84

Date: 27 Jan 2016
Created by: IM Unit, FAO Pakistan
Map Number: PAK_Soil Fertility Atlas_Punjab_SoilProbl_16.1_20150629



Disclaimer: The designations employed and the presentation of material on this map do not imply the expression of any opinion whatsoever on the part of United Nations concerning the legal status of any country, territory, city or area of its authorities, or concerning the delimitation of its frontiers or boundaries.

SOIL AND WATER TESTING FACILITIES AVAILED BY FARMERS



Map Legend

- Administrative limits**
- Country
 - Province
 - District
- Farmers who availed water tests (%)**
- Farmers who availed soil tests (%)**

About Map

The map shows percentage of farmers who availed soil and water testing facility. There is a dire need to enhance farmers' awareness regarding significance of soil/water/plant/fertilizer testing w.r.t. resource use, and also to strengthen the Quality Testing Labs.

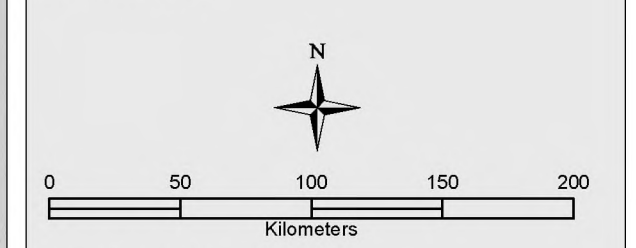
Data Sources

FAO, GAUL, Government of the Punjab, RFUA (2015)

Map Scale and Datum

Nominal scale: 1:2,698,500 at A3

Datum: WGS 84



Date : 27 Jan 2016

Created by: IM unit, FAO Pakistan

Map Number: PAK_Soil Fertility Atlas_Punjab_Soiltest_16.2_20150529

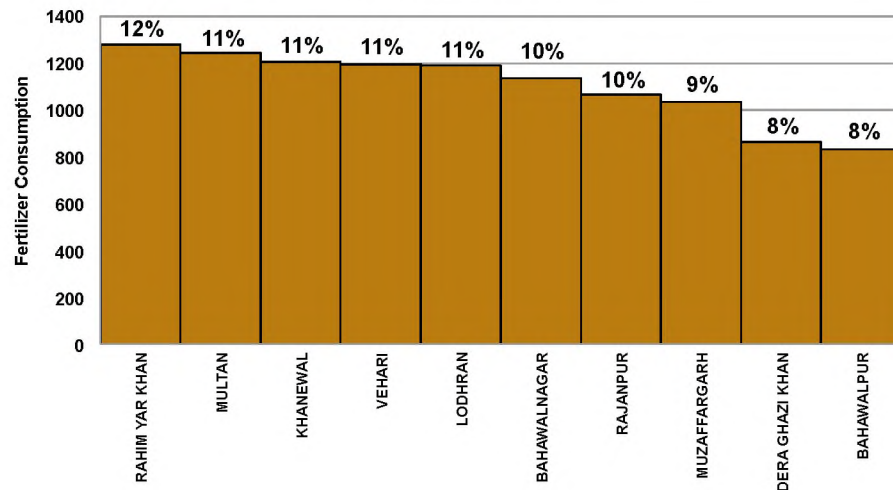


Disclaimer: The designations employed and the presentation of material on this map do not imply the expression of any opinion whatsoever on the part of the United Nations concerning the legal status of any country, territory, city or area or its authorities, or concerning the delimitation of its frontiers or boundaries.

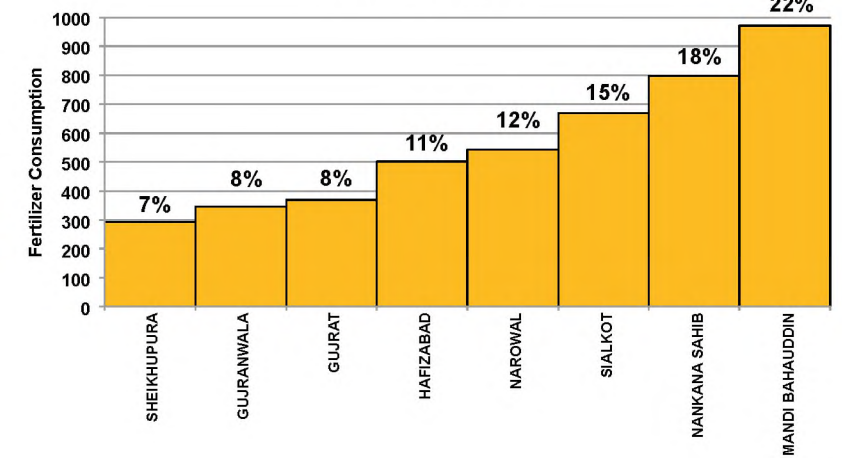
REGION-WISE COMPARATIVE FERTILIZER CONSUMPTION IN PUNJAB



Cotton-Wheat

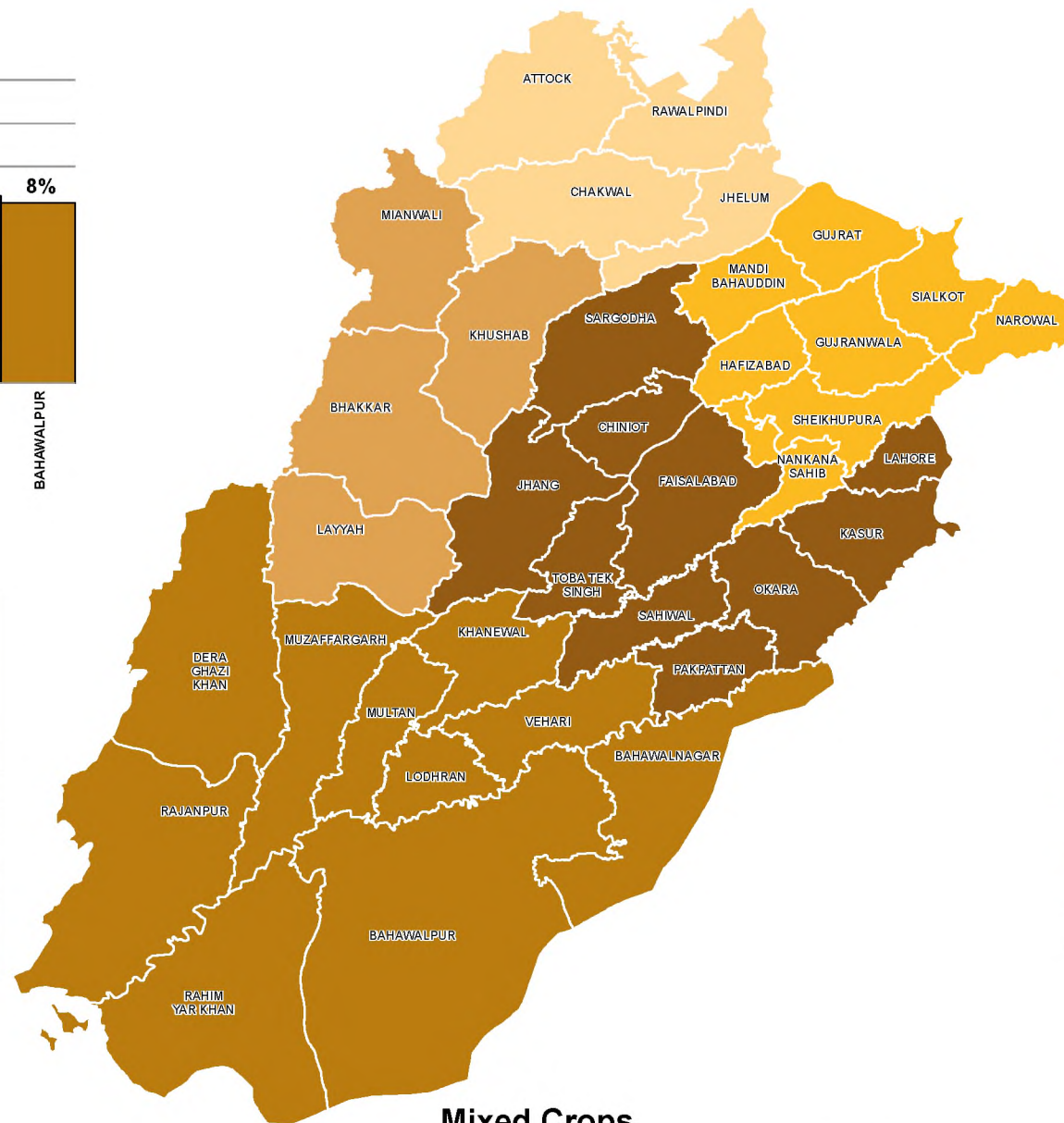


Rice-Wheat



Region	Total consumption of fertilizer* (kg/acre)	Respondents
Mixed Crops	11,414	330
Cotton-Wheat	11,049	330
Rice-Wheat	4,491	264
Pulses-Wheat	3,188	132
Maize-Wheat- Oilseeds	1,331	132

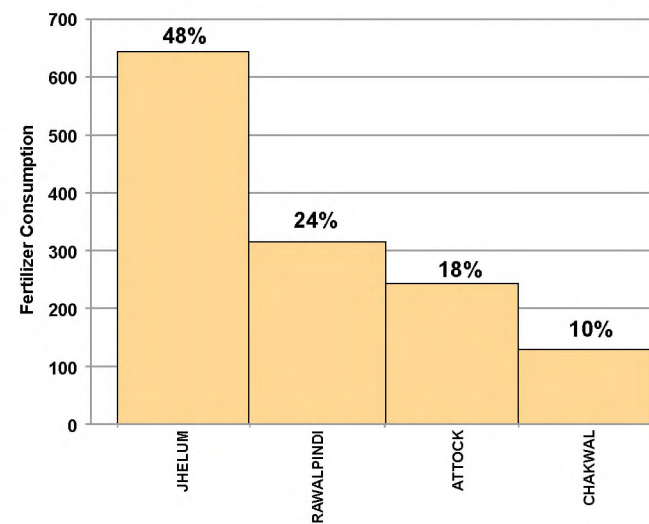
*The accumulated consumption was calculated for Wheat, Rice, Maize, Cotton and Sugarcane, if grown in the same field in a year. How, actual usage will vary depending on the crop(s) sown.



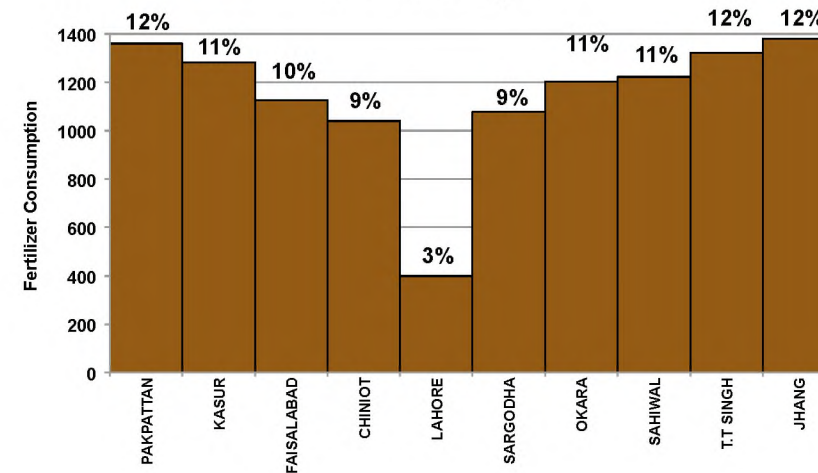
- Mixed Crops
- Cotton-Wheat
- Rice-Wheat
- Pulses-Wheat (Thal Area)
- Maize-Wheat-Oilseeds (Rainfed Area)

Note: The numbers in % above each bar represent each district's share in total consumption of fertilizer in the particular region.

Maize-Wheat-Oilseeds



Mixed Crops



Pulses-Wheat

