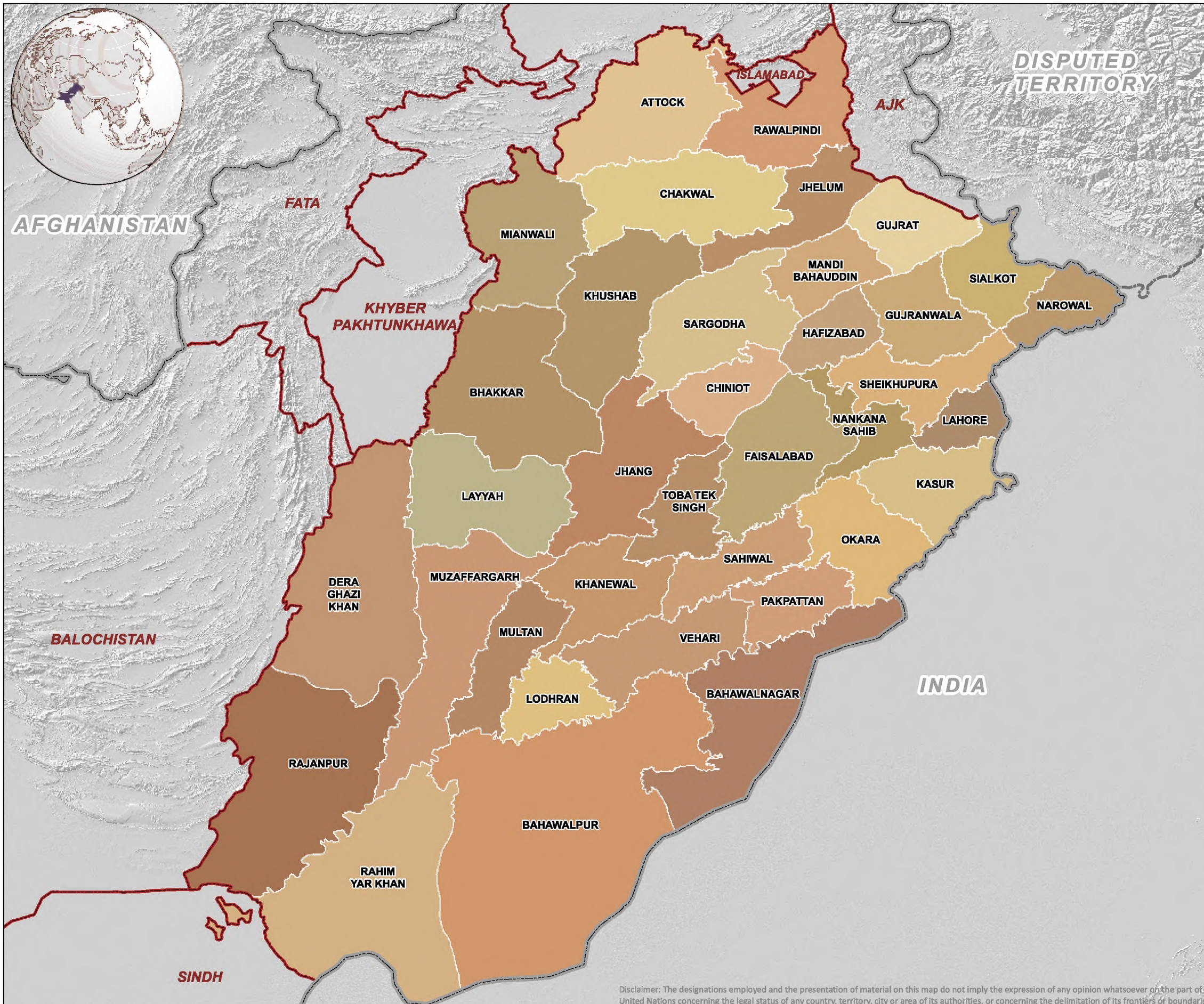




**SECTION 1**  
**GENERAL MAPS**

# DISTRICTS OF PUNJAB



## Map Legend

### Administrative limits

- Country
- Province
- District

## About Map

The map shows the districts in Punjab province. There are total 36 districts in the province.

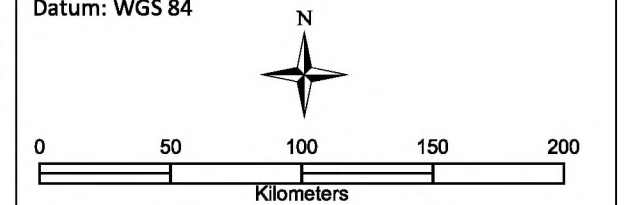
## Data Sources

Government of the Punjab, FAO and GAUL

## Map Scale and Datum

Nominal scale: 1:2,698,500 at A3

Datum: WGS 84



Date: 20 Jan 2016

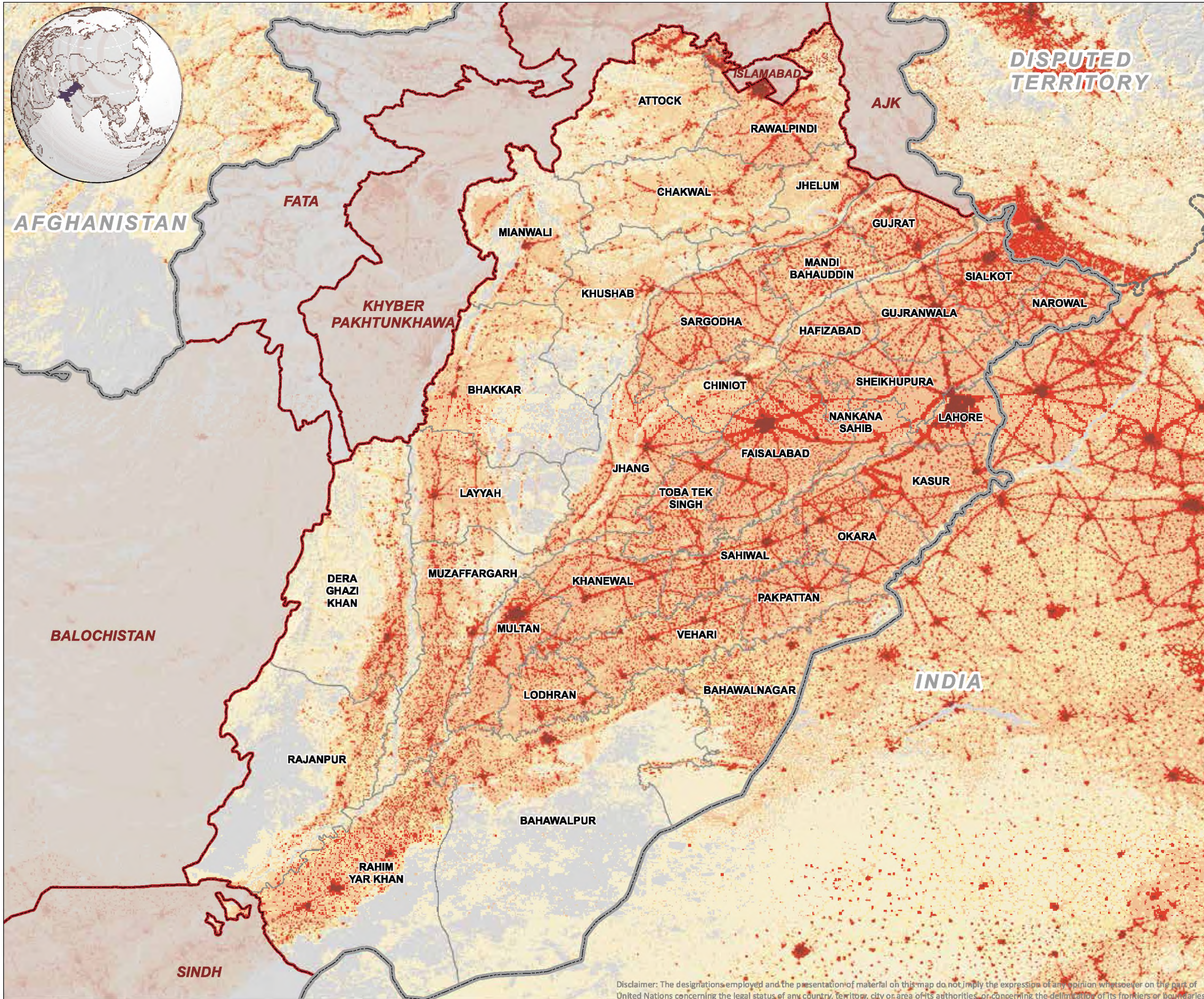
Created by: IM Unit, FAO Pakistan

Map Number: PAK\_Soil Fertility Atlas\_Punjab\_Districts\_01\_20150910



Disclaimer: The designations employed and the presentation of material on this map do not imply the expression of any opinion whatsoever on the part of United Nations concerning the legal status of any country, territory, city or area of its authorities, or concerning the delimitation of its frontiers or boundaries.

# POPULATION OF PUNJAB (Per square kilometer)



## Map Legend

Administrative limits	
	Country
	Province
	District

Population density (per square kilometer)	
	0
	1 - 5
	6 - 25
	26 - 50
	51 - 100
	101 - 500
	501 - 2,500
	2501 - 5,000
	5001 - 130,000

## About Map

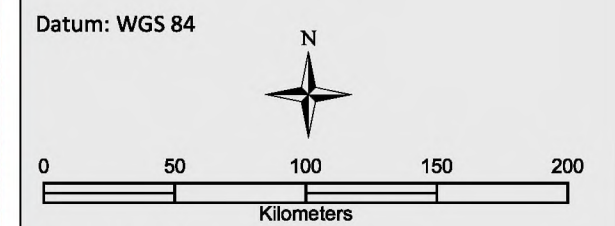
The map shows the population density i.e. number of persons per square kilometer in Punjab province.

## Data Sources

FAO, GAUL, LandScan data 2011

## Map Scale and Datum

Nominal scale: 1:2,698,500 at A3



Date: 12 Feb 2016

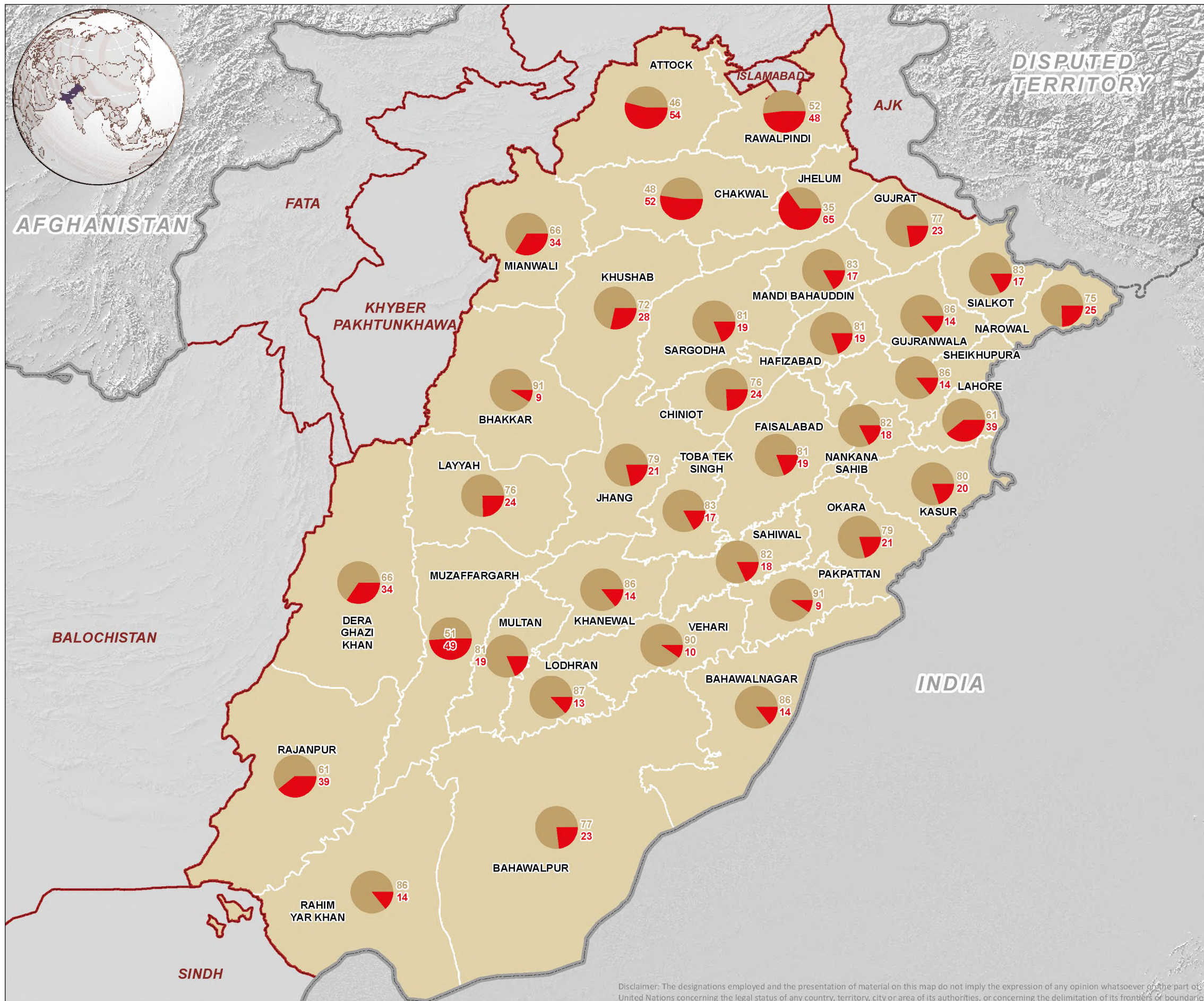
Created by: IM Unit, FAO Pakistan

Map Number: PAK\_Soil Fertility Atlas\_Punjab\_Population\_02\_20160212



Disclaimer: The designations employed and the presentation of material on this map do not imply the expression of any opinion whatsoever on the part of United Nations concerning the legal status of any country, territory, city or area or its authorities, or concerning the delimitation of its frontiers or boundaries.

# DISTRICT-WISE CULTIVATED AND NON-CULTIVATED AREA OF PUNJAB

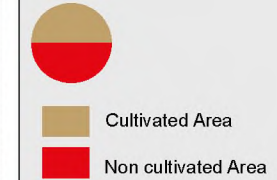


## Map Legend

### Administrative limits

- Country
- Province
- District

### Land Use (in percentage)



## About Map

The map shows extent of cultivated and non-cultivated area as percentage of the total area in each district. The data is derived from Land Use Statistics 2013-2014.

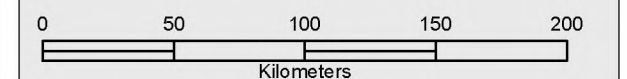
## Data Sources

FAO, GAUL, Land Use Statistics 2013-2014, Pakistan Bureau of Statistics.

## Map Scale and Datum

Nominal scale: 1:2,698,500 at A3

Datum: WGS 84



Date: 11 Feb 2016

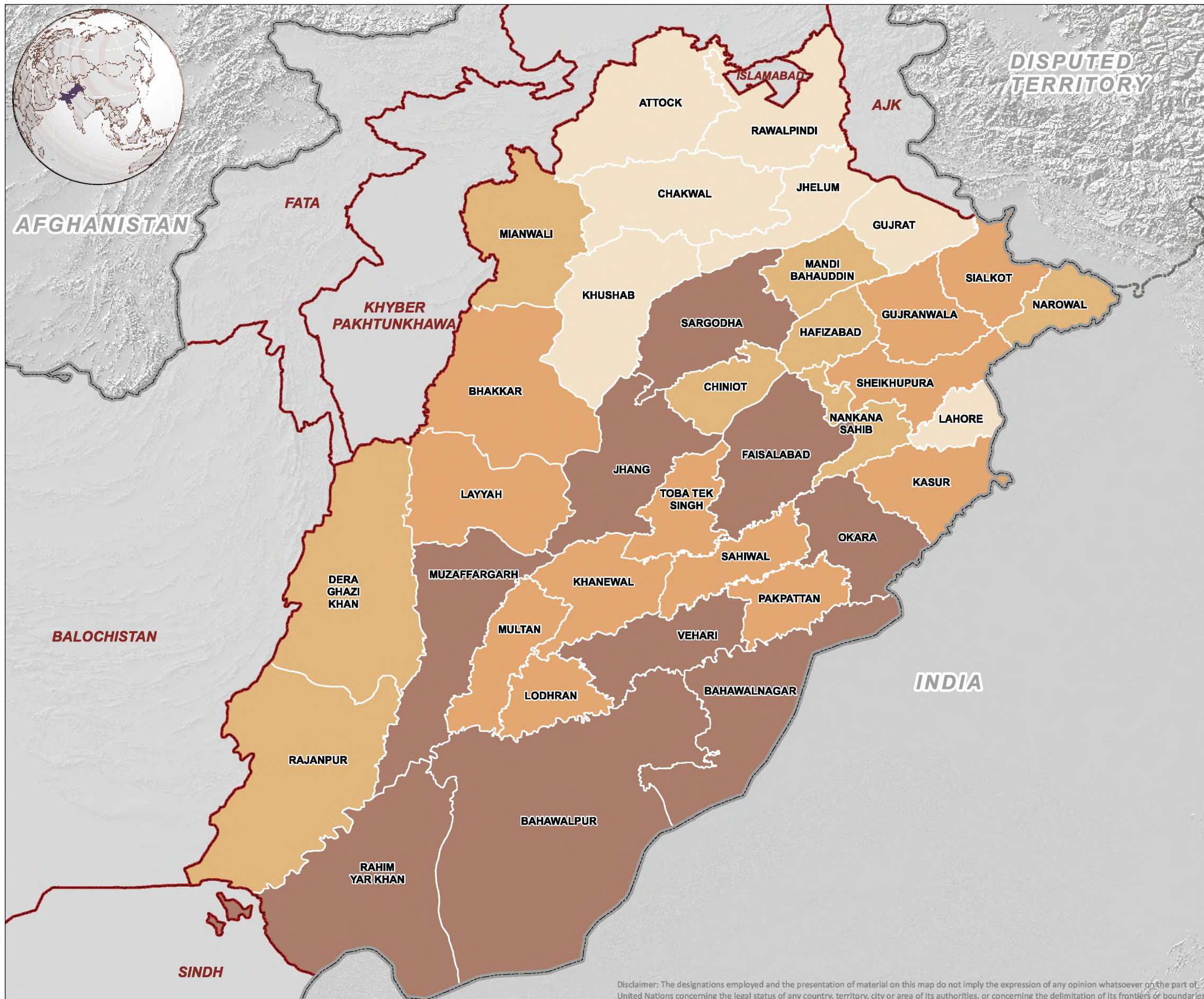
Created by: IM Unit, FAO Pakistan

Map Number: PAK\_Soil Fertility Atlas\_Punjab\_cultiv\_03\_20150910



Disclaimer: The designations employed and the presentation of material on this map do not imply the expression of any opinion whatsoever on the part of United Nations concerning the legal status of any country, territory, city or area of its authorities, or concerning the delimitation of its frontiers or boundaries.

# TOTAL AREA UNDER IRRIGATION IN PUNJAB (Hectares)



### Map Legend

#### Administrative limits

- Country
- Province
- District

#### Area under Irrigation (000 hectares)

- < 200
- 201 - 400
- 401 - 600
- 601 - 800

### About Map

The map shows the area under irrigation in each district. The data is sourced from Land Use Statistics 2013-2014, Government of the Punjab. The percentage of irrigated area may be relatively higher in the area-wise smaller districts.

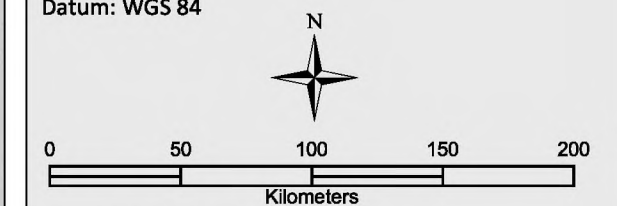
### Data Sources

FAO, GAUL, Land Use Statistics 2013-2014, Pakistan Bureau of Statistics.

### Map Scale and Datum

Nominal scale: 1:2,698,500 at A3

Datum: WGS 84



Date: 15 Feb 2016

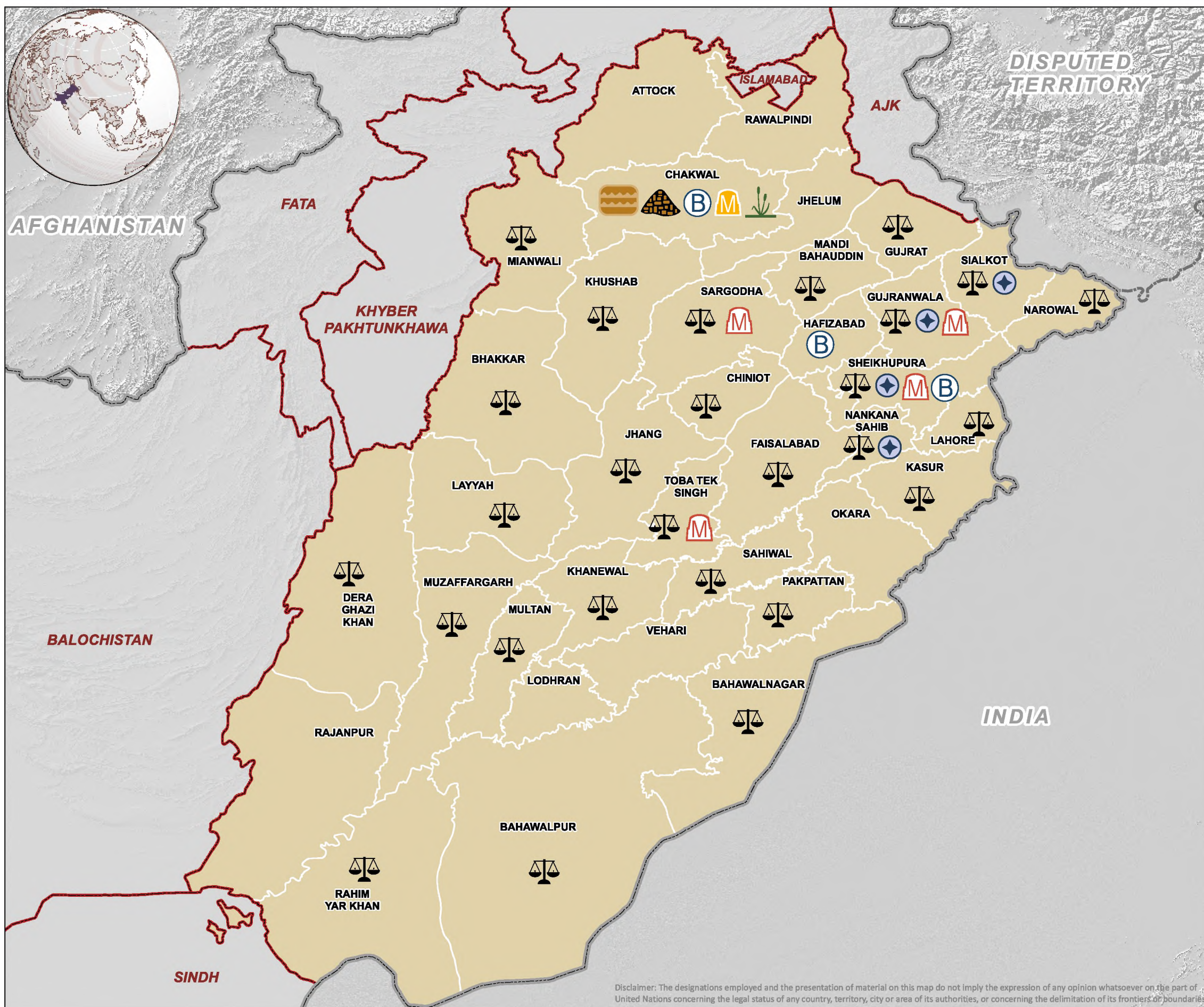
Created by: IM Unit, FAO Pakistan

Map Number: PAK\_Soil Fertility Atlas\_Punjab\_Irrigation\_04\_20150910



Disclaimer: The designations employed and the presentation of material on this map do not imply the expression of any opinion whatsoever on the part of United Nations concerning the legal status of any country, territory, city or area of its authorities, or concerning the delimitation of its frontiers or boundaries.

# SOIL FERTILITY AND SOIL HEALTH MANAGEMENT PRACTICES IN PUNJAB



## Map Legend

- Administrative limits**
- Country
  - Province
  - District
- Technologies by ICARDA (Collabrators)**
- Balanced use of N&P fertilizers using Fertilizer Prediction Model (University of Agriculture, Faisalabad)
  - Micronutrients (B, Zn and Fe) for citrus and vegetables (SFRI, Lahore)
  - Micronutrients for peanut (B) and wheat (Zn) (LRRI, NARC, Islamabad)
  - Use of Biozote (biofertilizer) (LRRI, NARC, Islamabad)
  - Green Manuring (SAWCRI, CHAKWAL)
  - Pak Seeder for rice residue management and zero-till wheat sowing (ABEI, NARC, Islamabad)
  - Fertilizer (DAP) Band Placement (LRRI, NARC, Islamabad)
  - On-farm composting and use of compost for growing vegetables (SAWCRI, CHAKWAL)

## About Map

This map shows soil fertility and soil health management practices/ technologies being promoted in Punjab by ICARDA in a USDA funded project "Improving soil fertility and soil health in Pakistan through demonstration and dissemination of best management practices for farmers".

## Data Sources

FAO, GAUL, ICARDA

## Map Scale and Datum

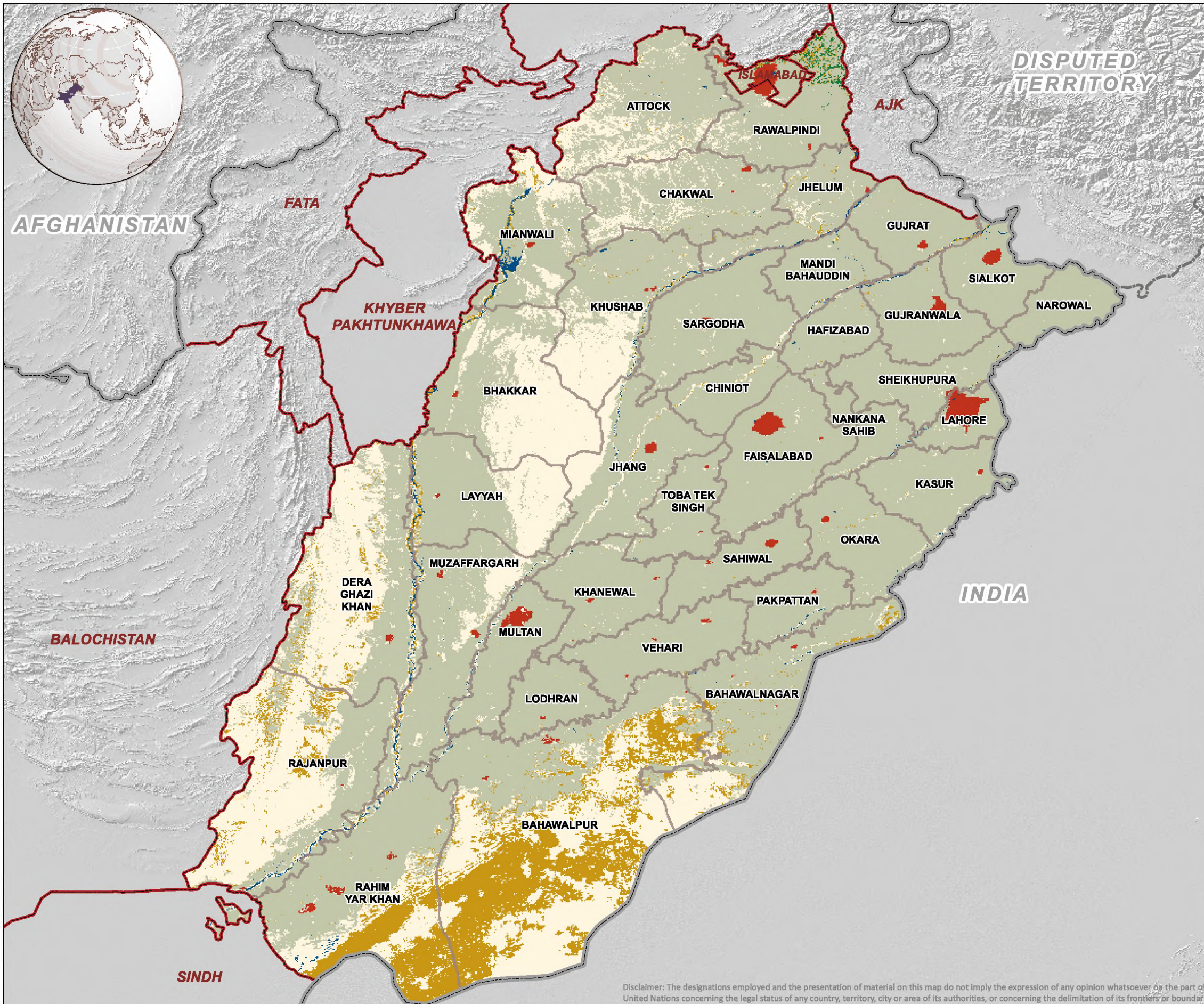
Datum: WGS 84 Nominal scale: 1:2,698,500 at A3  
 0 50 100 150 200  
 Kilometers

Date: 18 Feb 2016  
 Created by: IM Unit, FAO Pakistan  
 Map Number: PAK\_Soil Fertility Atlas\_Punjab\_ICARDA\_07\_20150910



Disclaimer: The designations employed and the presentation of material on this map do not imply the expression of any opinion whatsoever on the part of United Nations concerning the legal status of any country, territory, city or area of its authorities, or concerning the delimitation of its frontiers or boundaries.

# LAND COVER MAP OF PUNJAB



## Map Legend

### Administrative limits

- Country
- Province
- District

### Land Cover types

- Croplands
- Forests
- Grassland/Shrubland
- Sparse vegetation
- Urban/Builtup/Artificial areas
- Bare areas
- Water bodies

## About Map

The map shows different types of land covers/natural vegetation in the Punjab province.

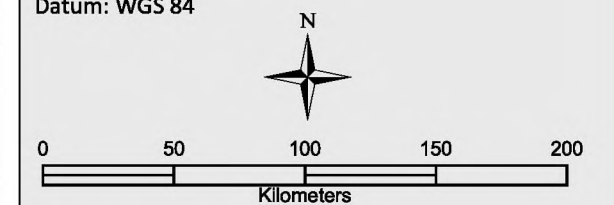
## Data Sources

FAO, GAUL, GlobeCover data 2009

## Map Scale and Datum

Nominal scale: 1:2,698,500 at A3

Datum: WGS 84



Date: 17 Feb 2016

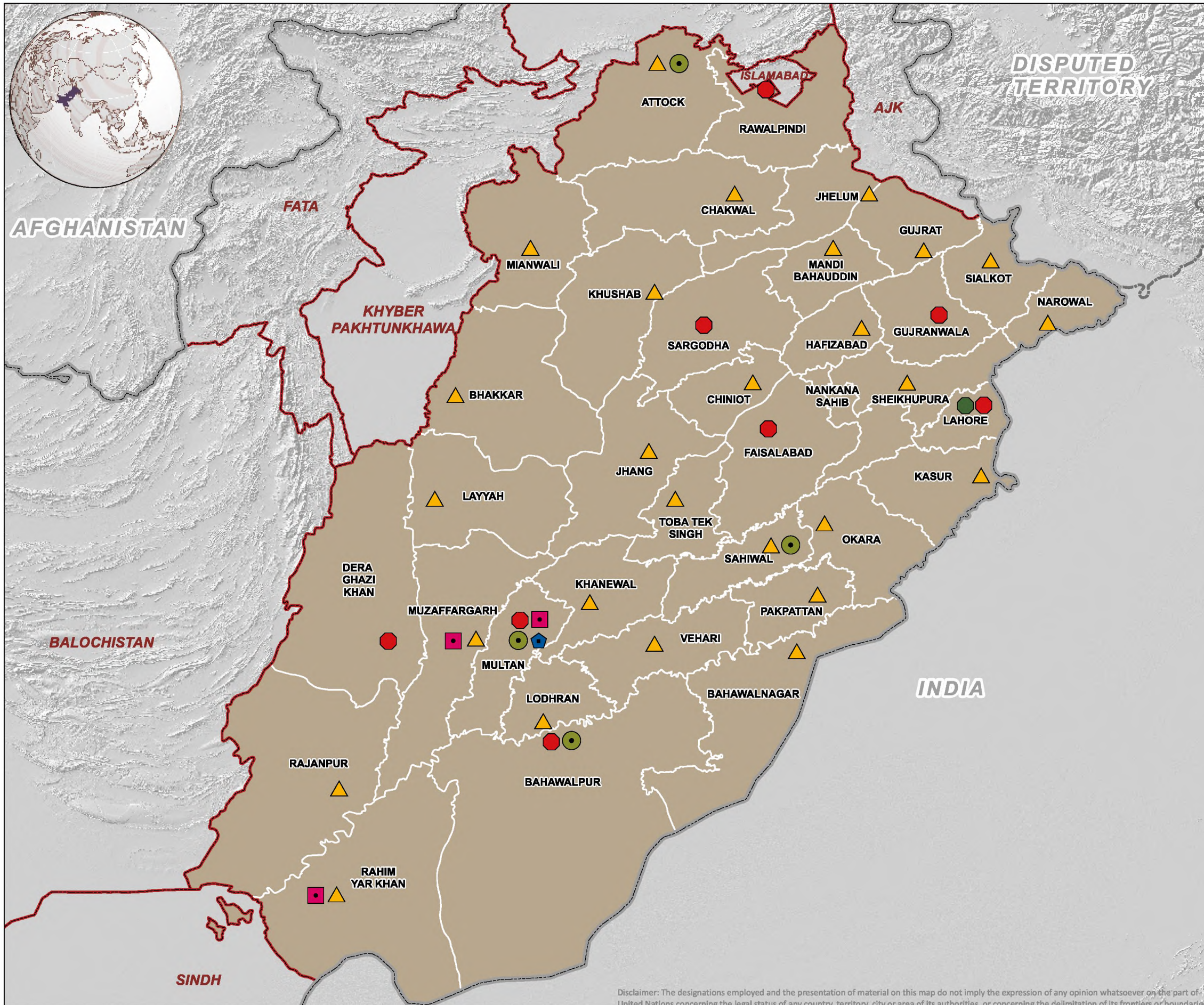
Created by: IM Unit, FAO Pakistan

Map Number: PAK\_Soil Fertility Atlas\_Punjab\_Landcover\_08\_20150910



Disclaimer: The designations employed and the presentation of material on this map do not imply the expression of any opinion whatsoever on the part of United Nations concerning the legal status of any country, territory, city or area of its authorities, or concerning the delimitation of its frontiers or boundaries.

# SOIL AND WATER TESTING FACILITIES IN PUNJAB



## Map Legend

### Administrative limits

- Country
- Province
- District

### Soil and water testing facilities

#### Rapid Soil Fertility Survey and Soil Testing Institute, Punjab

- Provincial Lab
- Divisional Lab
- District Lab

#### Fauji Fertilizer Company Limited

- Soil and Water Testing Lab/ Farm Advisory Center

#### Fatima Fertilizers Company Limited/Pak Arab Fertilizers

- Soil Fertility Lab

#### Engro Fertilizers Limited

- Soil Fertility Lab

### About Map

The map shows the current locations of various soil and water testing facilities in Punjab. For complete addresses of the facilities, refer to Annex V.

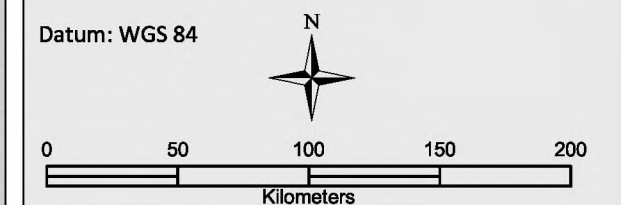
### Data Sources

FAO, GAUL, SFRI, FFCL, Fatima Fertilizers Limited/Pak Arab Fertilizers, Engro Fertilizers Limited

### Map Scale and Datum

Nominal scale: 1:2,698,500 at A3

Datum: WGS 84



Date: 23 Apr 2015

Created by: IM Unit, FAO Pakistan

Map Number: PAK\_Soil Fertility Atlas\_Punjab\_Soiltesting\_9\_20150910



Disclaimer: The designations employed and the presentation of material on this map do not imply the expression of any opinion whatsoever on the part of United Nations concerning the legal status of any country, territory, city or area of its authorities, or concerning the delimitation of its frontiers or boundaries.