

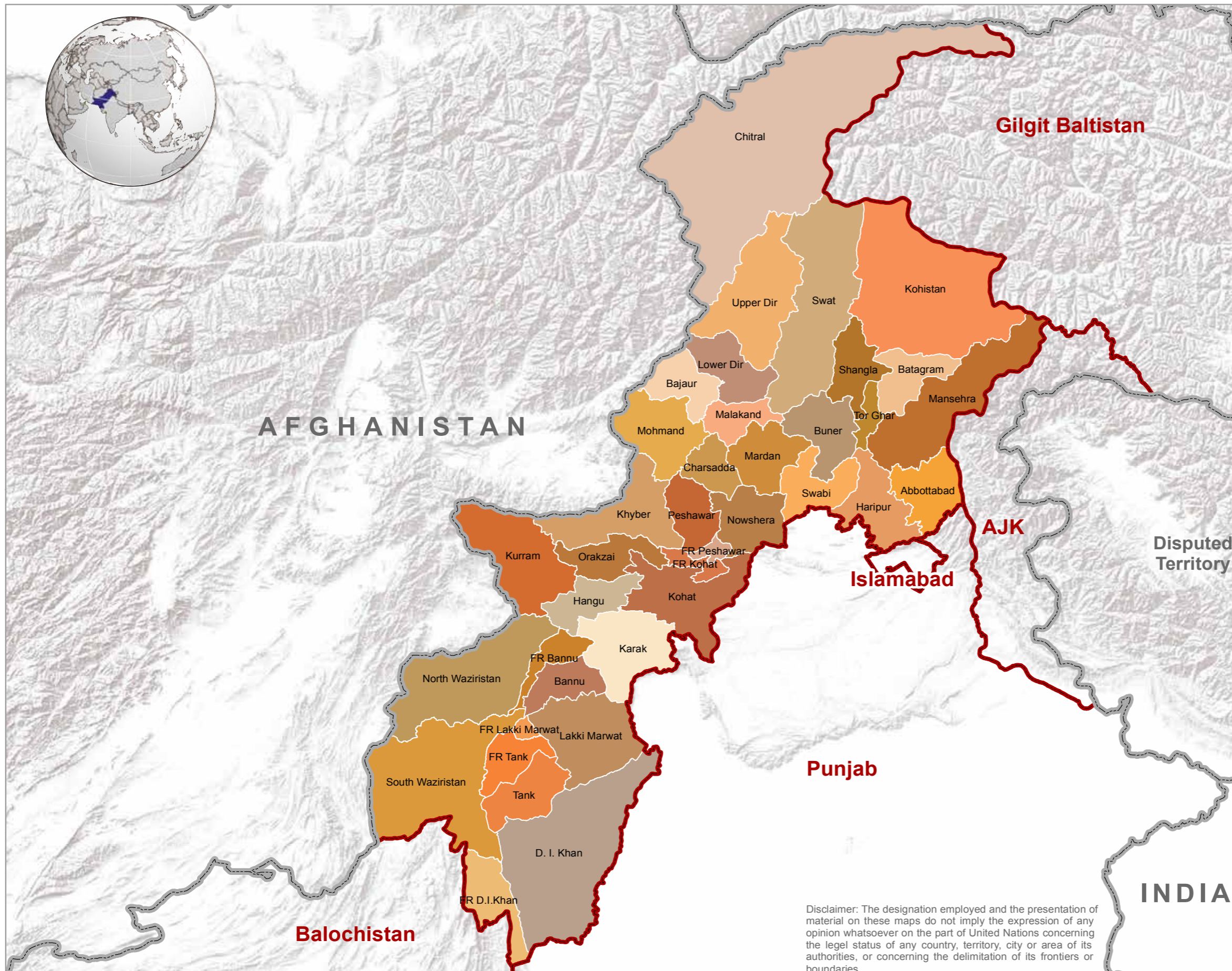
A detailed topographic map of a mountainous region, rendered in a monochromatic brown color scheme. The map shows intricate terrain features, including mountain ranges, valleys, and ridges. The text is centered over the map.

# **SECTION I GENERAL MAPS**

# DISTRICTS OF KHYBER PAKHTUNKHWA



**USAID**  
FROM THE AMERICAN PEOPLE



## Map Legend

### Administrative limits

- International boundary
- Provincial boundary
- District boundary

### About Map

The map shows the districts of Khyber Pakhtunkhwa province. There are 25 districts in the province. Area wise the districts in northern part, e.g., Chitral, Kohistan, and Swat are larger than the districts in central and south KP except Dera Ismail Khan which is the largest district in the lower part of the province.

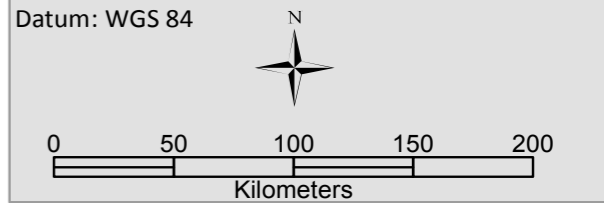
Date: 12 Dec, 2018  
 Created by: IM UNIT, FAO Pakistan  
 Map Number: PAK\_Soil\_Fertility\_Atlas\_Districts\_20181212\_1200

### Data Sources

GAUL, FAO and Government of Khyber Pakhtunkhwa

### Map Scale and Datum

Nominal scale: 1:3,000,000 at A3  
 Datum: WGS 84

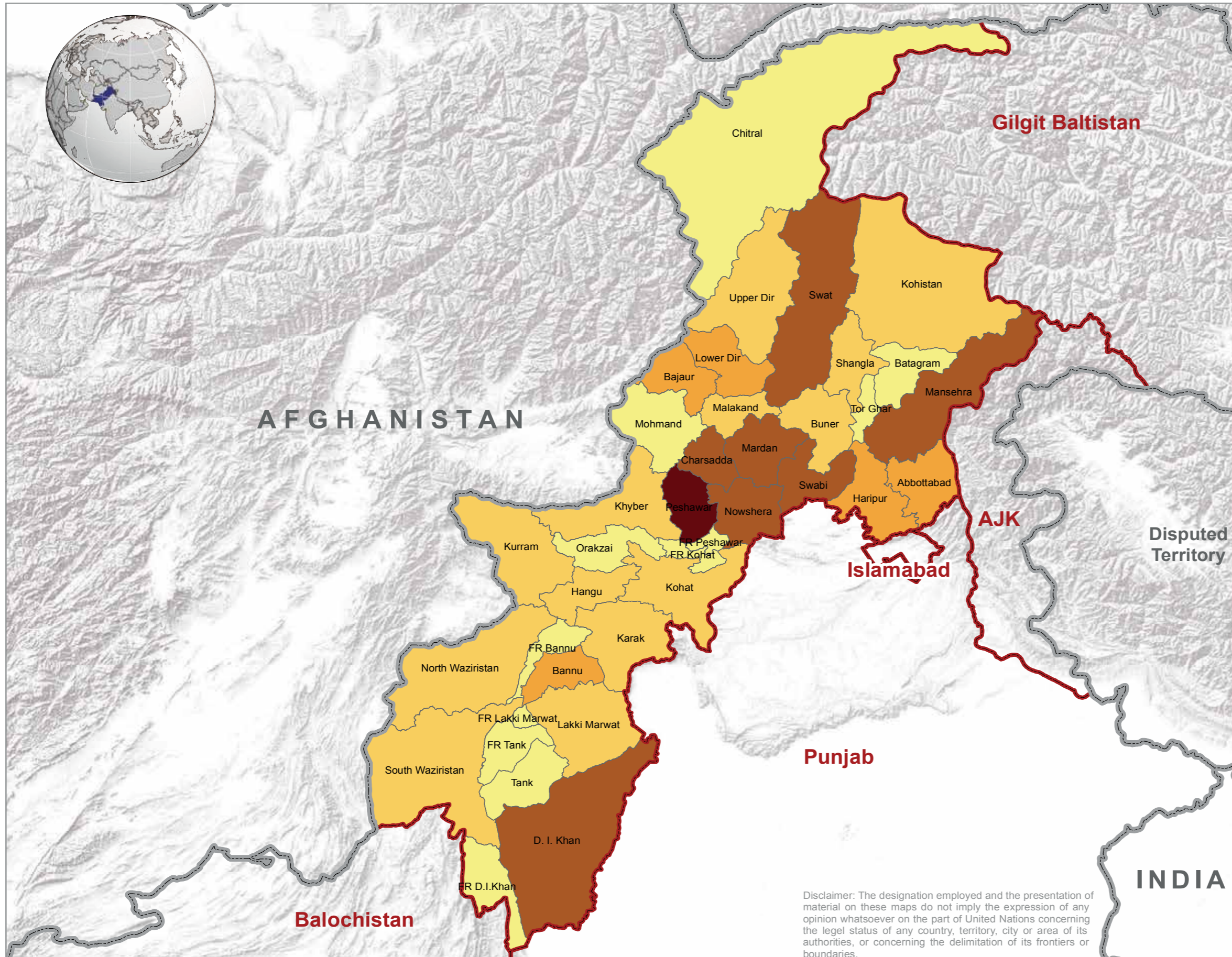


Disclaimer: The designation employed and the presentation of material on these maps do not imply the expression of any opinion whatsoever on the part of United Nations concerning the legal status of any country, territory, city or area of its authorities, or concerning the delimitation of its frontiers or boundaries.

# POPULATION DISTRIBUTION IN KHYBER PAKHTUNKHWA



**USAID**  
FROM THE AMERICAN PEOPLE



## Map Legend

### Administrative limits

- International boundary
- Provincial boundary
- District boundary

### Population Census 2017

- <500,000
- 500,001 - 1,000,000
- 1,000,001 - 1,500,000
- 1,500,001 - 2,500,000
- >2,500,000

## About Map

The map shows population density, i.e. approximate number of persons living in a particular district of Khyber Pakhtunkhwa province,

Date: 04 Dec, 2018

Created by: IM UNIT, FAO Pakistan

Map Number: PAK\_Soil\_Fertility\_Atlas\_Pop\_Map\_20181204\_1200

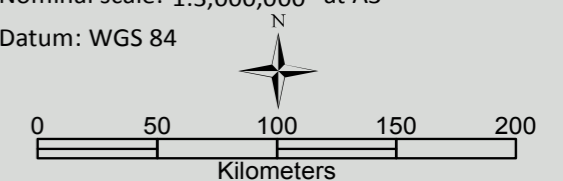
## Data Sources

GAUL, FAO and Government of Khyber Pakhtunkhwa

## Map Scale and Datum

Nominal scale: 1:3,000,000 at A3

Datum: WGS 84

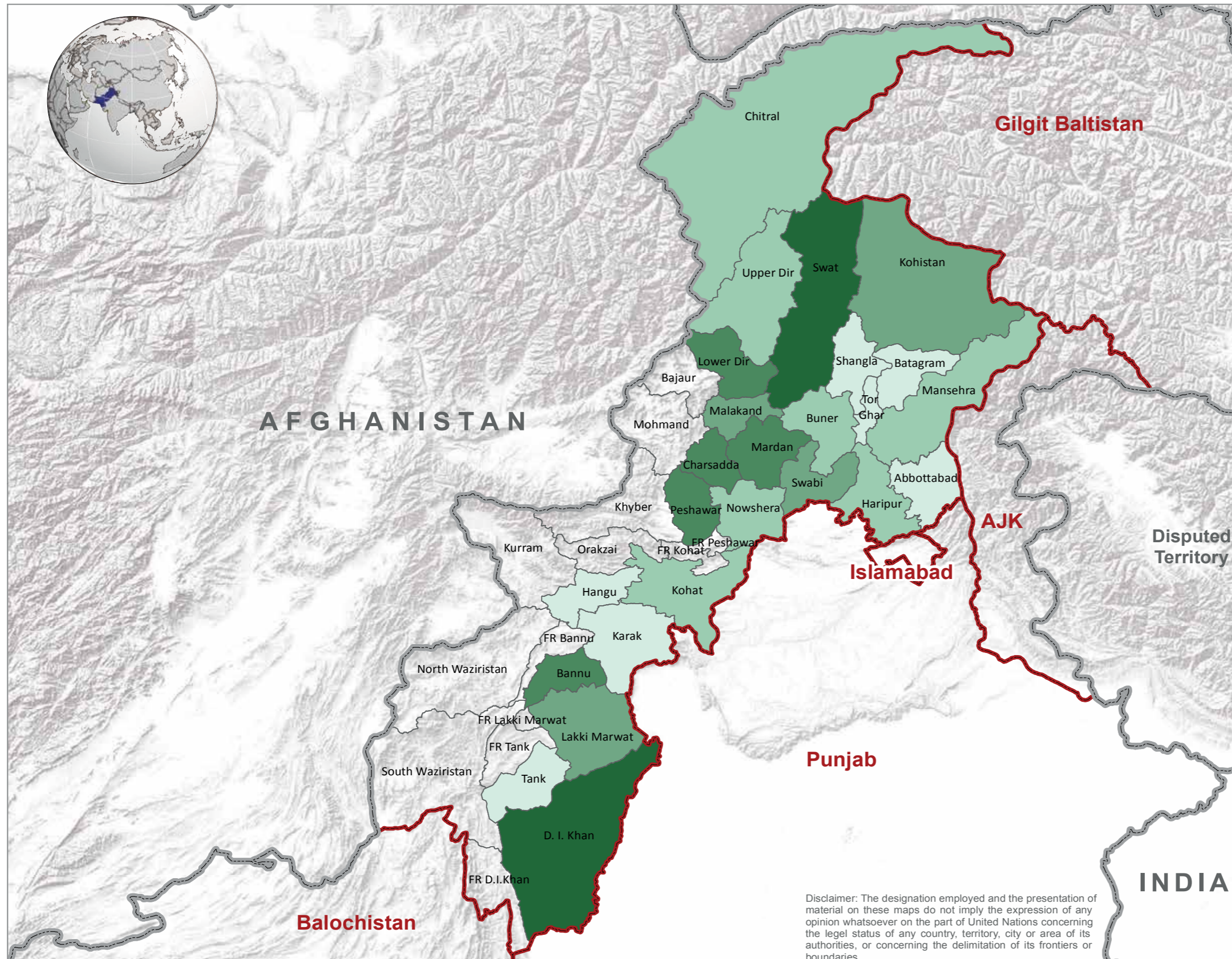


Disclaimer: The designation employed and the presentation of material on these maps do not imply the expression of any opinion whatsoever on the part of United Nations concerning the legal status of any country, territory, city or area of its authorities, or concerning the delimitation of its frontiers or boundaries.

# DISTRICT WISE TOTAL IRRIGATED AREA IN KHYBER PAKHTUNKHWA



**USAID**  
FROM THE AMERICAN PEOPLE



## Map Legend

### Administrative limits

- International boundary
- Provincial boundary
- District boundary

### Area under irrigation ( 000 Hectares)

- 0 - 9
- 10 - 25
- 26 - 40
- 41 - 80
- > 80
- Data not available

## About Map

The map shows area under irrigation in each district of Khyber Pakhtunkhwa.

Date: 12 Dec, 2018

Created by: IM UNIT, FAO Pakistan

Map Number: PAK\_Soil\_Fertility\_Atlas\_KP\_Irrigated\_Area\_20181212\_1000

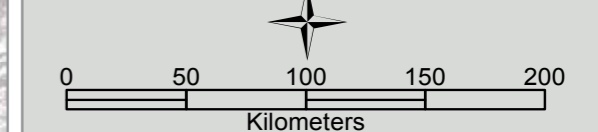
## Data Sources

GAUL, FAO and Government of Khyber Pakhtunkhwa

## Map Scale and Datum

Nominal scale: 1:3,000,000 at A3

Datum: WGS 84

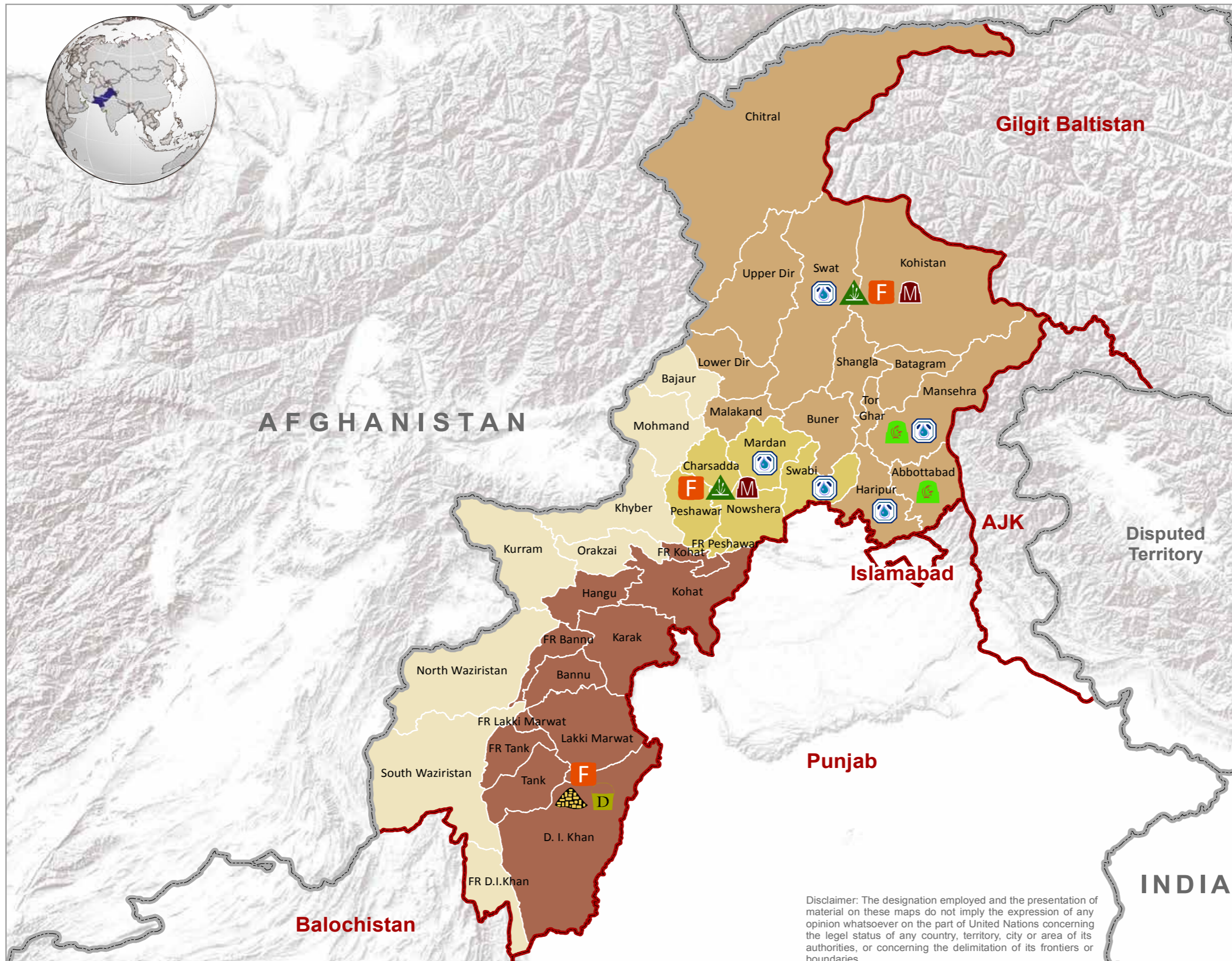


Disclaimer: The designation employed and the presentation of material on these maps do not imply the expression of any opinion whatsoever on the part of United Nations concerning the legal status of any country, territory, city or area of its authorities, or concerning the delimitation of its frontiers or boundaries.

# SOIL FERTILITY AND HEALTH MANAGEMENT PRACTICES



**USAID**  
FROM THE AMERICAN PEOPLE



## Map Legend

### Administrative limits

- International boundary
- Provincial boundary
- District boundary

### Zones

- North zone
- South zone
- Central zone

### Practices/Technologies

#### ICARDA

On-Farm/ Kitchen waste composting and use on wheat and vegetables (International Center for Agricultural Research in the Dry Areas)

Use of drip bucket irrigation system ((International Center for Agricultural Research in the Dry Areas)

Fertigation (Application of fertilizers with irrigation water) (Native best practice identified at farmers' fields with yield increase of 5-10%).

Application of poultry waste on vegetable crops (Native best practice at farmers' fields with improved yield and soil health).

#### NIFA

Utilization of agriculture waste by composting and application for vegetables and fruit orchards (This best practice is being promoted by NIFA and may result in 10-40% yield increase).

Application of fertilizers at right time for growing off-season vegetables in tunnels (Application of NPK at 30 days intervals enhances yield of off-season vegetables).

Foliar application of micronutrients and humic acid on horticultural crops (Nuclear Institute for Food and Agriculture, Peshawar).

## About Map

The map shows different best management practices being promoted/adopted across three crop production zones in KP (by ICARDA, NIFA, and adoption of native best management practices by the farmers themselves). In general, application of appropriate technologies results in 5-40 % yield increase in different cereal, vegetable and fruit crops.

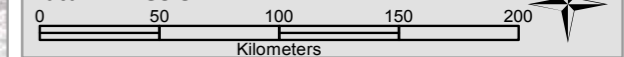
## Data Sources

GAUL, ICARDA, NIFA and Inputs Use Assessment  
FAO, 2018

## Map Scale and Datum

Nominal scale: 1:3,000,000 at A3

Datum: WGS 84

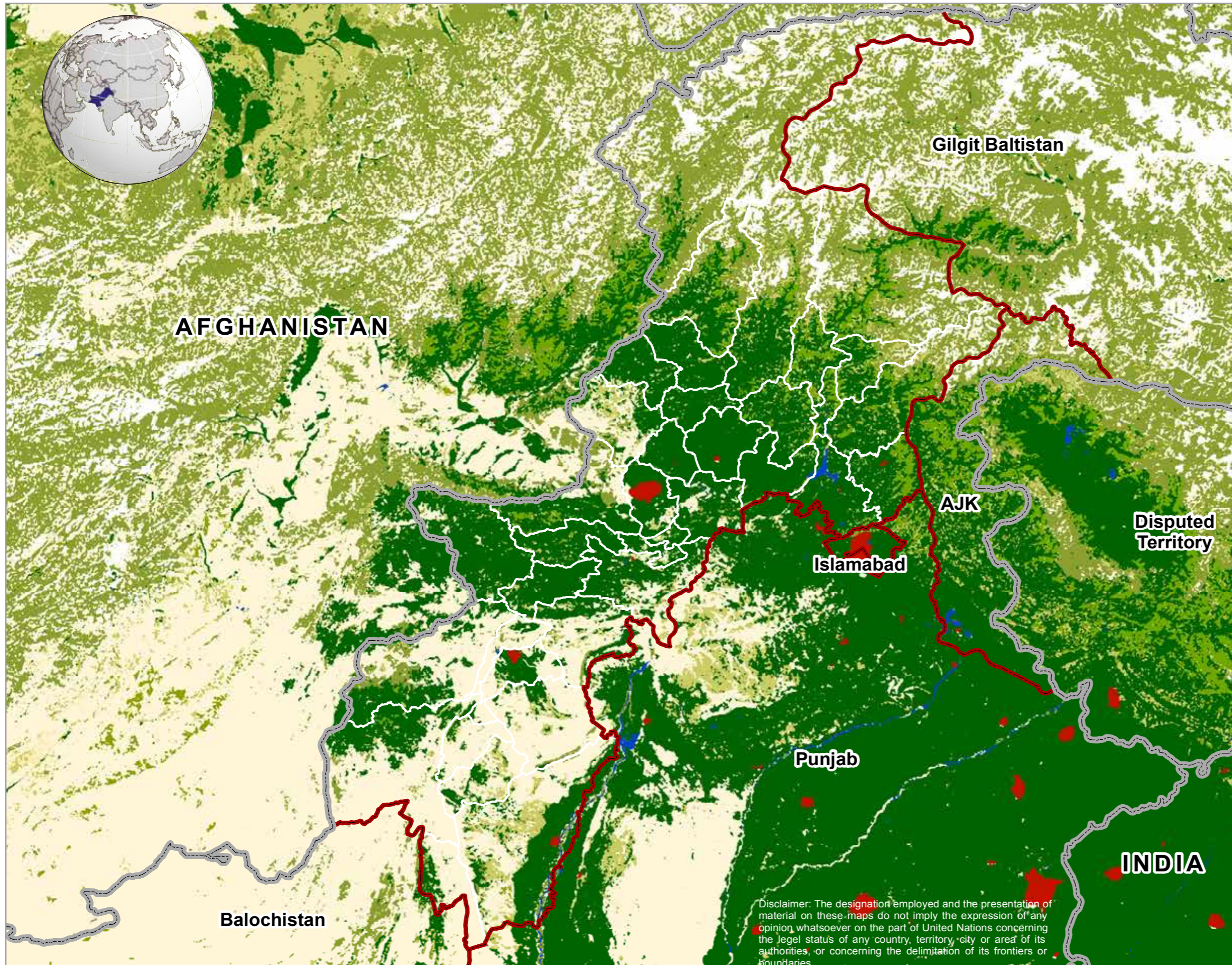


Disclaimer: The designation employed and the presentation of material on these maps do not imply the expression of any opinion whatsoever on the part of United Nations concerning the legal status of any country, territory, city or area of its authorities, or concerning the delimitation of its frontiers or boundaries.

# LAND COVER MAP OF KHYBER PAKHTUNKHWA



**USAID**  
FROM THE AMERICAN PEOPLE



## Map Legend

### Administrative limits

- International boundary
- Provincial boundary
- District boundary

### Land cover

- Croplands
- Forests
- Grasslands
- Sparse vegetation
- Built-up/Artificial areas
- Bare areas
- Water bodies

## Map Description

The province of Khyber Pakhtunkhwa has a diversified array of ecologies ranging from an extension of Thal desert in the south zone to high rainfall hilly areas in the north. Central part is the main irrigated agriculture zone, while upper zone has a mix of irrigated and rainfed cropping. The districts Abbottabad, Mansehra and upward are hilly terrain with evergreen natural forests and scattered croplands. The extreme north of Chitral and Gilgit are the cold areas with very sparse natural grasslands and agriculture activity. On the other extreme in south is the dry, bare hilly belt extending towards east-west.

Map Number: PAK\_Soil\_Fertility\_Atlas\_KP\_LC\_Map\_20181212\_1200

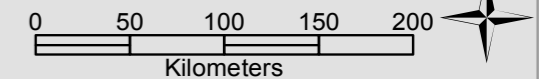
## Data Sources

GAUL, FAO and Globecover Data

## Map Scale and Datum

Nominal scale: 1:3,804,672 at A3

Datum: WGS 84

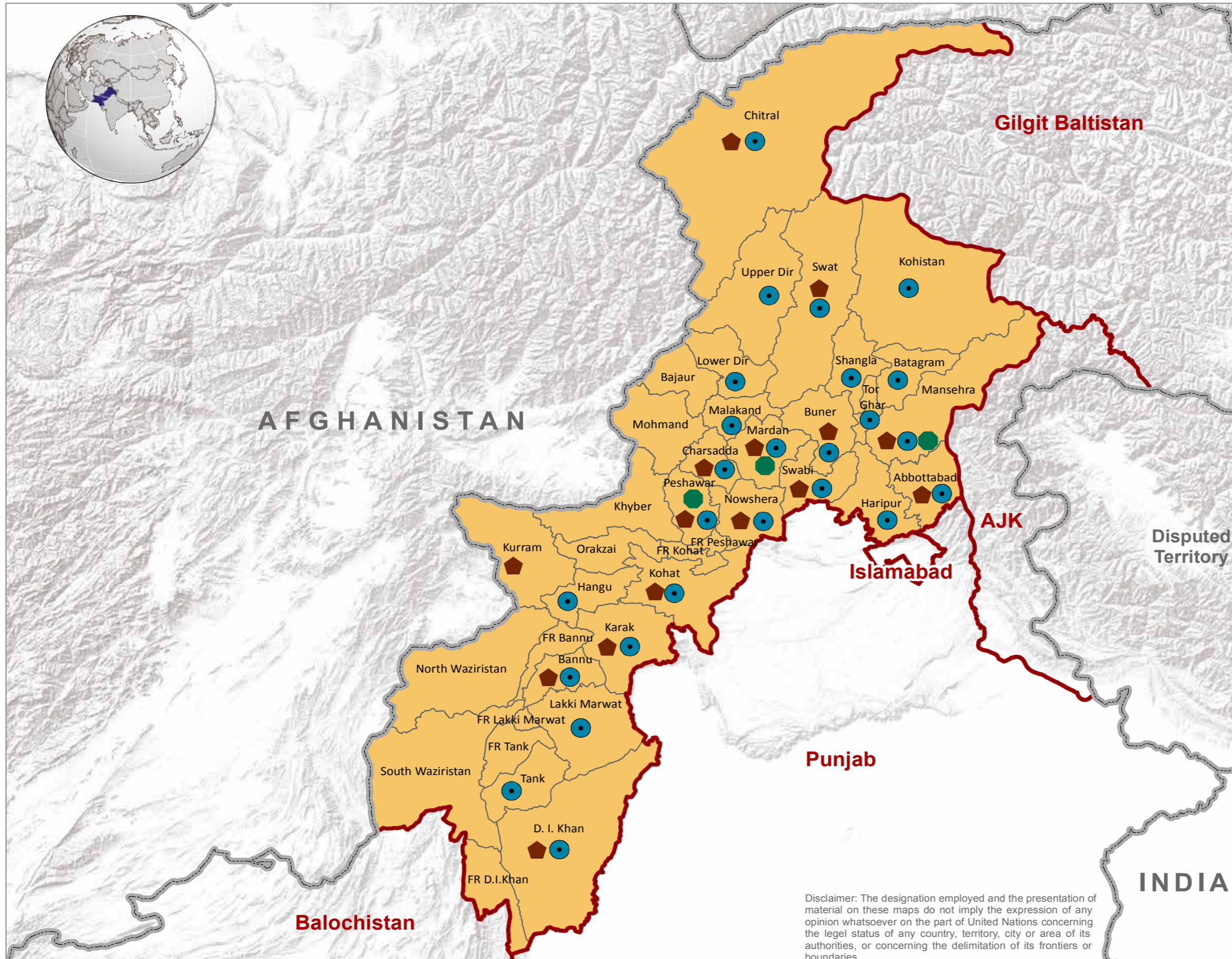
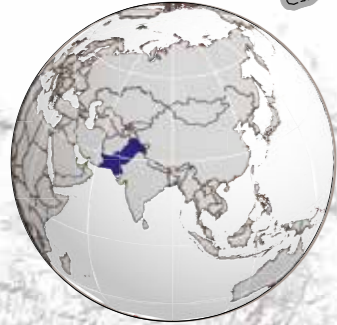


Disclaimer: The designation employed and the presentation of material on these maps do not imply the expression of any opinion whatsoever on the part of United Nations concerning the legal status of any country, territory, city or area of its authorities, or concerning the delimitation of its frontiers or boundaries.

# AGRICULTURE EXTENSION, SOIL AND WATER TESTING FACILITIES



**USAID**  
FROM THE AMERICAN PEOPLE



## Map Legend

### Administrative limits

- International boundary
- Provincial boundary
- District boundary
- Directorate of Agriculture Extension
- Directorate of Agriculture Research
- Others (University of Agriculture Peshawar; Tobacco Research Station, Mardan; Nuclear Institute for Food and Agriculture; Pakistan Council for Scientific and Industrial Research; Pakistan Forest Institute; Sub-stations of PARC)

### About Map

The map shows locations of demonstration cum research stations and soil and water testing laboratories providing advisory services to the farmers under the umbrella of KP Agriculture Department as well as other government organization. However, the capacity of public sector set up is limited and private sector fertilizer companies are actively involved in catering the requirements of farmers regarding soil and water testing.

Date: 12 Dec, 2018

Created by: IM UNIT, FAO Pakistan

Map Number: PAK\_Soil\_Fertility\_Atlas\_KP\_Soil\_Water\_20181212\_1000

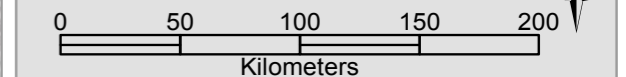
### Data Sources

GAUL, FAO and Government of Khyber Pakhtunkhwa

### Map Scale and Datum

Nominal scale: 1:3,000,000 at A3

Datum: WGS 84



Disclaimer: The designation employed and the presentation of material on these maps do not imply the expression of any opinion whatsoever on the part of United Nations concerning the legal status of any country, territory, city or area of its authorities, or concerning the delimitation of its frontiers or boundaries.